

SWU

m a g a z i n e

SWU MOVING TO THE NCAA DIV II

**A LIFETIME INVESTMENT:
AN INTERVIEW WITH
P.B. WOOD**

UNIVERSITY'S THEME VERSE FOR 2013/14 SCHOOL YEAR

FOR GOD HAS NOT GIVEN US A SPIRIT OF FEAR & TIMIDITY, BUT OF POWER, LOVE, & SELF-DISCIPLINE

II TIMOTHY 1:7

IN THIS ISSUE



SWU MOVING TO THE NCAA



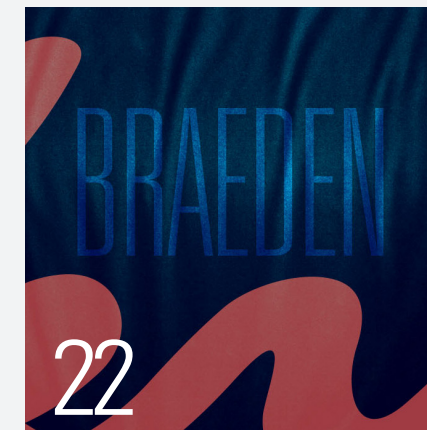
SWU GRAD EARNS BRONZE IN WORLD CHAMPIONSHIP



A LIFETIME INVESTMENT: AN INTERVIEW WITH P.B. WOOD



BREAKING DOWN BARRIERS, EARNING TRUST



BRAEDEN KERSHNER: SWU GRAD INSPIRES LOVE OF MUSIC IN OTHERS

- 4 INVESTING IN HIGHER EDUCATION
- 9 MAKING TRACKS
- 11 JAMES McDONALD: FACULTY PROFILE
- 16 WHY I GIVE
- 17 P.B. WOOD TOURNAMENT & GOLF FACILITIES DEDICATION
- 18 MASTER OF EDUCATION GOES ONLINE
- 19 FACULTY/STAFF OF THE YEAR
- 26 HOMECOMING 2013
- 27 ALUMNI NEWS
- 30 IN MEMORIAM
- 32 DONOR HONOR ROLL

PRESIDENT
Dr. Todd S. Voss

VP FOR DEVELOPMENT
Dr. Lisa C. McWherter

ART DIRECTOR
Kimberly Moorehead

WRITER/EDITOR
Ed Welch

MANAGING EDITOR
Cody Thomas

DESIGN
Josh Mayfield

ALUMNI RELATIONS
Joy Bryant

SWU

magazine

Issue #4: Fall/Winter 2013

SWU Magazine is published two times a year by the Office of Marketing and Communications.

INVESTING IN HIGHER EDUCATION STILL A SOLID VALUE

BY DR. TODD S. VOSS, *PRESIDENT*

Our media, and now, the government, have been spotlighting the rising cost of higher education, and it has consequently become a common point of conversation around the dinner table in American homes. In response, higher education professional associations and accrediting bodies have argued that stories about high costs and poor value have been significantly overblown, and instead the drastic reduction of state and federal support over the past decade, coupled with the declining education world rankings for the U.S. should be the real news reported in the headlines. Most agree on one thing: So goes education, so goes our prosperity as a nation. The question is this: Where in the hype and complexity of this topic is the truth? In particular, for our readers, how has Southern Wesleyan University fared in the measures being touted today?

There is no doubt that a college degree is a major investment. In an economy where something has to give, the pressure on families trying to put a daughter or son through college is intense. The Southern Wesleyan University family fully understands those pressures and has been working hard to be a best value leader for decades. In reality, the arguments can be compressed into two major categories, and the facts may actually be more encouraging than the media is revealing.

“A college degree and beyond will build a strong future, personally and nationally.”

Sticker Price versus Actual Net Cost

The biggest comment I hear from prospective students and their parents is that colleges are becoming less affordable. With that is the belief that private colleges like Southern Wesleyan are in the same boat. While there are a number of public as well as private religiously affiliated colleges who have intentionally, for reasons of exclusivity, raised their tuition and fees to become more selective in enrollment, high value institutions like Southern Wesleyan have been committed to keeping our costs in check to allow this campus to be accessible and affordable.

The truth is, there has been a shift in the way families need to look at pricing. It is no longer about the sticker price, but instead the net price after financial aid that is the real number to consider. With the decline in government support, public colleges and universities have had to increase costs and reduce aid to students to keep up. But Southern Wesleyan University has never received those dollars to achieve our goals, and instead we have worked hard to raise additional endowment and grant support to offer more aid to students. The College Board reported

in 2012 that the average inflation-adjusted net tuition and fees (published tuition and fees minus grant aid from all sources and federal higher education tax benefits) at private colleges dropped 3.5 percent from 2007 to 2012. While public colleges and universities have been ramping up tuition and fees, private colleges like SWU, on average, have been finding ways to do more with less.

The Value of a College Degree

In terms of worth, a college degree with “values,” especially from a Christ-centered college like Southern Wesleyan, has the potential for more return than ever before. Considering the uncertainty of the economy, over the course of an individual’s lifetime, a college degree is still the best and most marketable investment a person can make. A recent study by the Georgetown University Center on Education and the Workforce indicates that by 2018, six in ten American jobs will require some form of post-secondary education. It is predicted that USA employers will need 22 million new workers with post-secondary degrees. Between December 2007 and February 2012, people with a bachelor’s degree gained 2.2 million jobs, while people with a high school diploma or less lost 5.8 million jobs. The U.S. Census Bureau reported in 2012 that workers with a bachelor’s degree or higher earned more than \$78,000 per year on average and even those with an associate’s degree earned approximately \$49,000 per year.

With America losing its first place education ranking among developed nations years ago, it seems prudent to set the record straight. This is not the time to minimize education. This is not the time to fearfully retreat from this investment (and it IS a wise investment) and not the time to reduce support. A college degree and beyond will build a strong future, personally and nationally. This is especially true when a degree has the value of being built on the Christ-centered mission of Southern Wesleyan University. We are devoted to transforming lives by challenging students to be dedicated scholars and servant leaders who impact the world for Christ. We at Southern Wesleyan are committed to being part of the solution and not part of the problem. We are working hard to contain costs, create opportunities, offer scholarships, and reach more students to catapult individuals, families, communities and the nation to prosperity and independence.



Dr. Todd S. Voss

**"THIS IS A MONUMENTAL DAY
FOR SOUTHERN WESLEYAN UNIVERSITY"**

CHRIS WILLIAMS, ATHLETIC DIRECTOR



SOUTHERN WESLEYAN UNIVERSITY CAN START THE PROCESS TOWARDS **NCAA DIVISION II MEMBERSHIP** AND JOIN **CONFERENCE CAROLINAS**, NCAA OFFICIALS ANNOUNCED SEPTEMBER 17TH.

Southern Wesleyan was initially turned down for membership in July but after a lengthy appeal process has been granted approval to begin the track towards NCAA membership. Conference Carolinas has sponsored SWU's membership application and appeal since January.

"This is a monumental day for Southern Wesleyan University," said Athletics Director Chris Williams. "This has been a long process with a lot of ups and downs, but we couldn't be happier with the outcome. God, once again, has shown His mercy and provision for Southern Wesleyan and we will continue to use this stage as a platform to honor Him."

Achieving full NCAA Division II membership typically takes three years, provided the athletic department successfully completes each phase of the membership process. Southern Wesleyan will spend two years in candidacy status and then one year as a provisional member of NCAA Division II before gaining full membership status. The earliest SWU can become a full member is the 2016-17 academic year.

SWU will remain a member of the NAIA and the Southern States Athletic Conference (SSAC) for the 2013-14 seasons and will have access to SSAC and NAIA post-season cham-

pionships. During the 2014-15 and 2015-16 academic years, Southern Wesleyan will play a full slate of NCAA Division II and Conference Carolinas regular season competition. The Warriors will not be eligible for NCAA or Conference Carolinas post-season competition until the 2016-17 seasons after full NCAA Division II membership has been attained. However, SWU will remain a member of the NCCAA and be eligible for post-season competition throughout the membership process.

Conference Carolinas consists of 10 full members including four in South Carolina. The current members are: Barton College (Wilson, N.C.), Belmont Abbey College (Belmont, N.C.), Converse College (Spartanburg, S.C.), Erskine College (Due West, S.C.), King University (Bristol, Tenn.), Lees-McRae College (Banner Elk, N.C.), Limestone College (Gaffney, S.C.), Mount Olive College (Mount Olive, N.C.), North Greenville University (Tigerville, S.C.) and Pfeiffer University (Misenheimer, N.C.). Emmanuel College (Franklin Springs, Ga.) has also been accepted to NCAA Division II and Conference Carolinas and is following the same process as SWU.

Southern Wesleyan sponsors 15 intercollegiate varsity athletic programs that will make the transition to the NCAA Division II level.

MAKING TRACKS



Southern Wesleyan University coaches Corey Morrell (Women's Soccer), Greg Thiel (Men's & Women's Track & Field), and Camilo Rodriguez (Men's Soccer) check out progress on the Track and Soccer Complex. After numerous delays brought on by a rainy summer, construction work moved into high gear as concrete was poured, fencing installed and grass was put into place at the complex, located near the entrance to Southern Wesleyan University's campus in Central. Construction also began on the hammer throw area adjacent to the track. Future phases will include installation of lighting, grandstands and locker room facilities.



SWU GRAD TURNS 100!

Bernice Carter, a 1952 graduate, celebrated her 100th birthday Oct. 1. She stays actively involved in her church, plays piano at the local senior center, and continues to drive her own car. Joy Bryant, executive director of alumni and constituent relations, and Dr. Lisa McWherter, vice president for development, paid Bernice a visit at her Hemingway, S.C., home to join family and friends in celebrating her birthday. Bernice attended this year's Homecoming celebration at SWU, where on Oct. 26 faculty, staff and alumni were able to celebrate with her.

SWU GRADUATE EARNS BRONZE IN WORLD CHAMPIONSHIP

Lindsey Torgerson, a 2009 Southern Wesleyan University business graduate and a member of Team USA, earned a bronze medal Aug. 10 at the ITU World Championship in Ottawa, Canada.

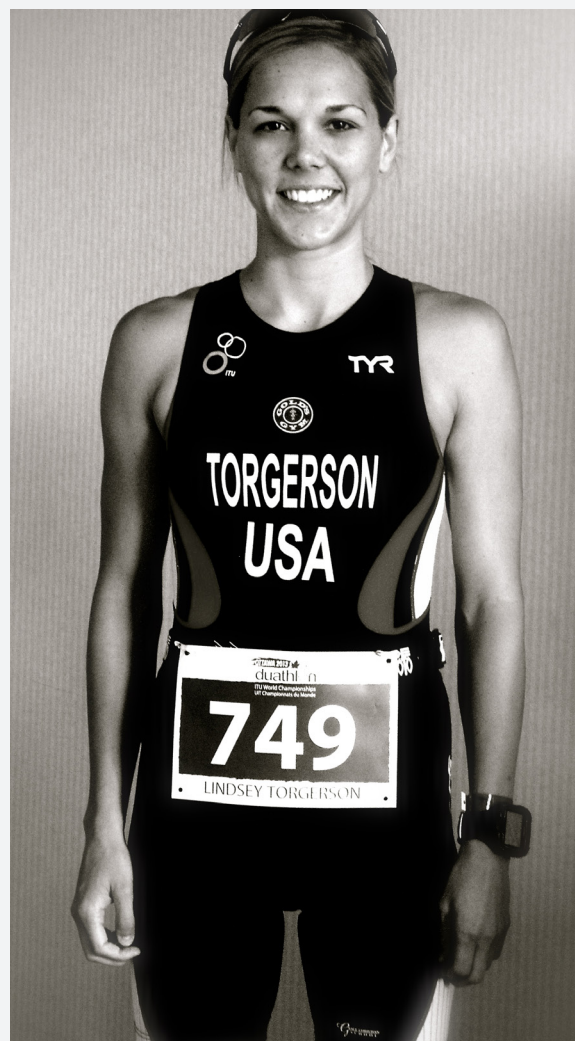
In October, she traveled to Tucson, Ariz. to compete in the USA Duathlon National Championship, a qualifier for the 2014 World competition in Spain.

While at SWU, Torgerson was a member of the Warriors Women's Basketball Team when they won the NCCAA championships in 2007. Since graduating, she has competed in several endurance events nationally and internationally, including the Miami Man Half Iron Triathlon, where she won first-place for her age group; the Black Water Duathlon National Championship in Maryland; and the 2012 ITU Long Course Duathlon in Switzerland, where she won a silver medal.

Torgerson currently lives and trains in San Antonio, Tex. and recently landed a sponsorship with Dallas-based 2Quick Carbon Technology. She is a fitness service manager with Gold's Gym International.

Torgerson is grateful that she has been able to apply what she learned while at Southern Wesleyan – hard work and discipline – as a Warrior. She learned about priorities and the place God has in her life. She also feels blessed to have the continuing support of family members, including her father, the late Dr. Brian Torgerson; and her mother, Candace Torgerson.

“God has opened up some amazing opportunities for me and I am enjoying every moment.”



JAMES McDONALD: FACULTY PROFILE

Dr. James McDonald, associate professor of criminal justice, came to Southern Wesleyan University in 2012. He spent more than 18 years in criminal justice before heading the criminal justice department at Greenville Technical College.

McDonald challenges conventional perceptions by students viewing criminal justice as a career option, pointing out there are hundreds of jobs available in law enforcement agencies, corrections agencies and the judicial branch.

“I have been blessed with the opportunity to spend my life in public service,” said McDonald, who began his career as an environmental lab technician, then became a forensic scientist for the Greenville County Department of Public Safety. Certified as both a police officer and a corrections officer, McDonald also has experience as crime lab director and jail administrator.

“During all of that time I always had a passion to teach,” McDonald said. “I taught Sunday School and I always enjoyed seeing the light come on in somebody's head. You know when they have that ‘aha’ moment – that is my reward.”

McDonald returned to the classroom to work on his master's degree, then he began teaching at Greenville Tech, where he taught one of their first classes in forensic science. Having built up the program at a large community college, McDonald said God was leading him in a new direction.

Dr. Walt Sinnamon, dean of Southern Wesleyan's College of Arts and Sciences, contacted McDonald about building a forensic science program. McDonald taught a few classes at Southern Wesleyan, but was hesitant to move into full-time work at a program that was far smaller. Since those days, the criminal justice program at Southern Wesleyan has more than doubled and continues to grow.

“God proved something to me. God just showed me just how big He is,” he said. “I love being here. It's like being paid to eat ice cream,” McDonald said, adding that he sees the need for Godly men and women in the field.





A. Lifetime Investment

AN INTERVIEW WITH P.B. WOOD

P.B. Wood, professor emeritus of psychology, and long-time part of the Southern Wesleyan University staff as well as one of its graduates, witnessed a remarkable slice of the institution's history from the second half of the 20th Century. He is part of a continuing family legacy that has existed since the university's founding.

Q: Tell me about your family and how their long relationship with Southern Wesleyan University started.

A: My maternal grandfather was one of the founders, H.S. Dixon. He was conference president, they called them in those days, of the South Georgia Conference of the Wesleyan Methodist Church. He was involved in the founding of this college. From day one, someone in my immediate family has been involved.

Q: Tell me about your education at Southern Wesleyan. When you first came here, was it in the academy?

A: Yes, that was in '44. South Carolina had 11 grades for a high school diploma. I had to go home for one semester while my Dad was sick. North Carolina had added 12th, so they put me back in courses I had the year before, in the middle of the year, and I just wouldn't go to school. So I came down here the next year and they put me in the year I would have been if I stayed here. Then gave me a diploma and graduated me. I came back here to junior college several years later. I got to checking and found out that I had never really finished high school because of that one semester in Gastonia. So they took me downstairs up here and gave me the GED test. My diploma from here, my transcript from here still says GED. So I went from here to Guilford on the basis of a year and a half and a GED."

Q: How did you join the staff of Southern Wesleyan?

A: I was the first dean of students they had here. I had no guidelines. I just created the position. Dr. Mullinax and Dr. Rickman were very supportive of course. Dr. Mullinax, the president, told me 'We don't know what this requires, what we need to do – we're just relying on you.' I sort of built the role and developed student government. We were one of the early colleges to have student representation on faculty committees. I just thought it was an appropriate idea.

Q: How were times and customs different?

A: Male and female Students would go in the classrooms and separate. They sat on opposite sides of chapel and the church and it drifted into the classroom. The week that we opened here – I had talked to President Claude Rickman and they were very happy for somebody to take a lead in some of these things. But I had all the students together in front of the old administration building take a moonlight stroll. They were all standing there – the women on one side of the steps and the men on the other. I said 'All right, pair up now!' They looked at me and looked at one another and nobody moved. I went out and grabbed a guy by the arm and a girl by the arm, walked them down front and I put her hand in his and said 'this is the way you take a moonlight stroll.'

Q: What was the dress code like?

A: Nobody wore shorts. The women didn't wear slacks; they had to wear dresses. It was about modesty in apparel. They had something against open-toed shoes. Nobody knew where some of this came from.

Q: What do you recall were some of the high and low points you've seen?

A: My wife and I were out celebrating our wedding anniversary. I got a call that there was a fire at McDonald Hall. By the time I got there, most of the girls were out of the building, but I immediately organized them by floors and had them then break up into rooms and we discovered immediately that there were two girls in adjacent rooms that were not there. I asked if anybody had seen them, but nobody had. Dr. Rickman and I went in the building. We went up to the third floor where they were located, but it was intense fire, it was an inferno by then. It wasn't long

until we knew that they were burned. The coroner said they never woke up. The college immediately got national attention and we started getting help from places. The president of the Jantzen plant sent a truckload of clothes for those girls the next morning, because they didn't get out with anything but their nightclothes on. Bob Jones immediately called and told us to let them know if they could do anything. He casually said 'we've got warehouses full of dormitory furniture.'

“When I was in high school here, my ‘work study’ job was milking the cows. I used to milk four cows every morning and evening.”

Q: Students were assigned chores, how was that?

A: When I was in high school here, my 'work study' job was milking the cows. I used to milk four cows every morning and evening. They were down about where the parking lot is down that hill from the gymnasium. Towards that valley in there we had a big pasture. I would go milk them and they had a couple of other students assigned to carry the milk in buckets to the dining hall. I was so small I couldn't lug those things up there, but I knew how to milk a cow."

Q: What makes this place unique?

A: I think probably and I feel pretty sure it still attains the intimate relationship of faculty, staff and students. It is not as easy to define now since we've grown as much as it used to be. But when I came here in '62 there was that kind of feeling but it was very informal. I started the first seminar of any sort here. The students met in my house one night a week.

Q: What was the most striking change you saw?

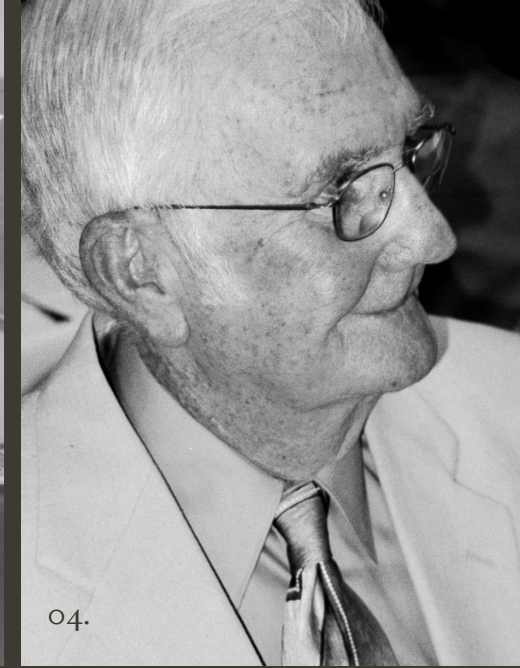
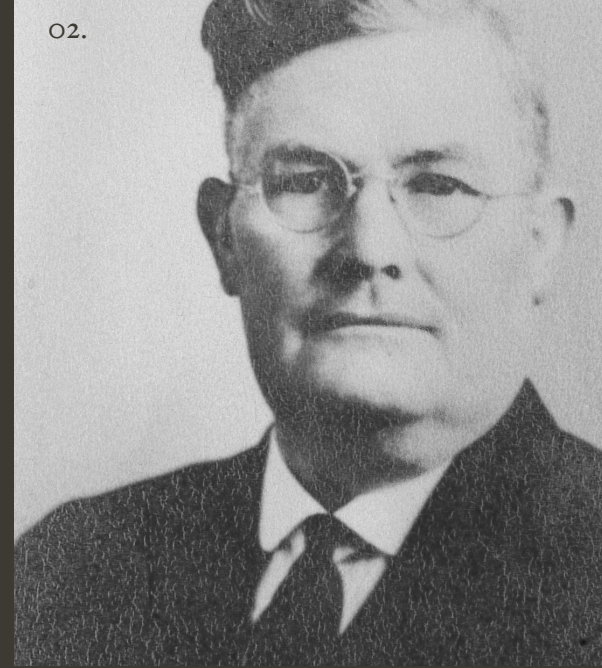
A: One of the most significant things has to be the normalizing of student activities and student relationships. There's diversity of faculty now. I think the most significant thing is the diverse representation in the student

body. We are a denomination that had really been born as an advocate for the rights of all people. In 1964, we admitted a student from Africa who was in Germany at the time. I was pretty sure he was not going to be able to fund coming here, but it was the right thing to do. We had his application, his credentials were all in order, and the president felt it important that he tell the board that we admitted this deserving student. Well, the man never did come. The next year, we admitted John Wesley Taylor, who was the district superintendent in our African Wesleyan Church in Sierra Leone. He came here with his family. He graduated three or four of his children.

It's been worth a lifetime of investment here for me to see these changes.

IMAGES:

- 01: 1960s aerial view of the Southern Wesleyan University's campus in Central, SC
- 02: John Archie Wood, P.B. Wood's father, 1947
- 03: Don Wood, P.B. Wood's nephew
- 04: P.B. Wood
- 05: Don Wood, P.B. Wood's nephew
- 06: Smith Hall
- 07: MacDonald Hall
- 08: Dr. James Bross, Dr. Keith Connor and Dr. P.B. Wood



WHY I GIVE

Recently, our pastor preached about “Extravagant Generosity.” When I read the sermon title, my first reaction was that it must be time to pledge our tithes for next year. However, despite my cynicism, the title did cause me to think about why I give. I was raised by parents who taught me to give 10 percent to the church, charities and missions. Every Sunday, I carefully placed my dime in the offering plate to reflect this training. But really, why do I give other than that is how I was raised; and it is just habit to give?

I give because as an educator, I am awed by the amazing generosity of many of our young people. Jack Henderson draws “anything” you request for donations to raise funds for the Sick Kids Hospital in Edinburgh. Rachel Beckwith gave up birthday celebrations and asked for “no party, no big presents” to help provide clean drinking water for people in Africa. Charlie Simpson cycled for five miles around a park to raise relief funds for Haiti. Max Siepert, who heard a discussion about 9/11 in his social studies class, gave all his summer savings — \$ 10.03—to his local police department to make a difference. He remarked that it would be “awesome if everyone gave.” I feel compelled to follow the examples of these and many other young people in the world.

I give because I have more and others have less. God has blessed me more than I have ever imagined. “From everyone who has been given much, much will be demanded; and from the one who has been entrusted with much, much more will be asked” (Luke 12:48). In Acts 20:35 Jesus taught that it is more blessed to give than to receive. This has proven true because whatever I have given has always returned to me as a blessing multiplied many times.

I give because when I was 12 years old our home was completely destroyed by a devastating fire. We rushed from the blazing house in the middle of the night dressed in our pajamas. It was a blessing that no one was hurt, but we were literally homeless with no food, clothing or shelter. In the spirit of “I was hungry and you gave me something to eat, I was thirsty and you gave me something to drink, I was a stranger and you invited me in, I needed clothes and you clothed me” (Matthew 25:35), people that we did not know responded with abundant and cheerful generosity providing food, clothing and a home.

I give because, as a teacher, I taught students who were hungry because they had no food at home; who were cold because they did not have coats to wear; who were sick because they did not have the proper medicine to take; who could not attend classes because they did not have money for tuition. John the Baptist answered, “Whoever has two tunics is to share with him who has none, and whoever has food is to do likewise” (Luke 3:11).

After considering why I give, I decided that I give for a variety of reasons. But I cannot truly say that I give in the way that the pastor suggested. I feel compelled to rise to the challenge to practice “extravagant generosity”—to give more freely to make a positive difference by extraordinary sharing. If I strive to excel in everything — in faith, in speech, in knowledge, in complete earnestness and in my love for Christ, I must also strive to excel in this grace of giving (2 Corinthians 8:7). I am led to be extravagantly generous with my time, my gifts, and my resources.

*by Dr. Sandra McLendon,
assistant professor and acting dean of education*

P.B. WOOD GOLF TOURNAMENT BENEFITS PROMISE FUND

First-Place winners of the P.B. Wood Golf Tournament are Johnny Ross of Anderson, John Ross of Anderson, Marty Atcheson of Central, and John Atcheson of Six Mile. Each won a set of JPX 825 Mizuno Irons. The Oct. 14 tournament, named for SWU professor emeritus and noted psychologist P.B. Wood, benefits the Promise Fund, SWU’s annual fund. The title sponsor for this year’s tournament was First Citizens Bank; event sponsor was Palmetto Insurance; platinum sponsors were Coy Huffman & Associates and Ram Technologies; and the gold sponsors were Chipotle Mexican Grill and The Parkette.

CAMPUS GOLF FACILITIES DEDICATED

On Oct. 30, Southern Wesleyan University dedicated the P.B. Wood Driving Range, in honor of Paul Baker Wood, longtime member of the university’s staff and faculty emeritus of psychology. Pictured from left are Phillip Mishoe, Central city administrator; Wood, Sam and Jondi Cole, Chris Williams, SWU director of athletics; and Charles Joiner, chairman of SWU’s Board of Trustees. Wood brought golf to SWU, starting at the club level, then was instrumental in raising the funds for the range. The Coles gave a large gift for the range for the naming. Also, a sign was unveiled dedicating the putting green to Marty Atcheson, the university’s senior vice president for finance; and the Mary Faith Jennings Picnic Pavilion was dedicated.



SOUTHERN WESLEYAN TO OFFER ONLINE MASTER IN EDUCATION

Southern Wesleyan University announced that a fully online master of education degree will be offered this Spring. A master of education degree in classroom leadership is projected to begin March 23, 2014. This online graduate program is designed for advanced professional development of educators, qualifying them for a pay increase for earning this advanced degree. The program is designed for individuals who have earned a bachelor's degree in education and state certification and have one year of teaching experience.

Teachers with master's degrees who are seeking to become certified in a specific content area will also be able to take online courses that can help them attain add-on certification from the South Carolina Department of Education. These areas include Literacy, Learning Disabilities, Gifted and Talented and Early Childhood Special Education.

Southern Wesleyan University also currently offers online bachelor's and master's degrees in business administration, as well as an online associate of arts degree in general studies.

For details about online degrees offered by SWU, go online to swu.edu/online or call 877-644-5557.

CONNECT WITH SWU



facebook.com/southernwesleyanuniversity.central



twitter.com/swu_edu



youtube.com/southernwesleyanuniv



instagram.com/swu_edu



linkedin.com/company/southern-wesleyan-university

FOLLOW THE BIG THINGS THAT ARE HAPPENING AT SOUTHERN WESLEYAN UNIVERSITY

VISIT SWU.EDU/SOCIAL FOR EVEN MORE OPTIONS.

FACULTY & STAFF OF THE YEAR



DEB EISCHEN
faculty member of the year

"I would say that Dr. Eischen is a profound educator who integrates faith into daily teaching and her lifestyle."

JOSH THATCHER, SENIOR BUSINESS MAJOR

"She is a dynamic woman that knows her subject matter and is gifted in engaging students. She has the unique ability to draw out the best in everyone."

MARY LU SAYLOR, AGS BUSINESS MAJOR

"Dr. Eischen brings new meaning to the word 'enthusiastic.' She is genuinely passionate about changing the lives of each and every one of her students and colleagues."

DREW WELCH, SENIOR BUSINESS MAJOR

"Melissa Vess is all around wonderful! She is always there if we need anything and always offers an encouraging word."

HANNAH COVINGTON, JUNIOR RELIGION MAJOR

"Melissa will do whatever it takes to make everyone she comes in contact with feel comfortable and at ease. God's light is seen through her shining example."

FAITH JAMES, JUNIOR SPECIAL EDUCATION MAJOR

"Melissa Vess encourages those she leads to be the very best version of themselves! She always has a kind word and her sweet spirit emanates from within!"

CAROLINE MARTIN, SENIOR ELEMENTARY EDUCATION



MELISSA VESS
staff member of the year

BREAKING DOWN BARRIERS, EARNING TRUST

Personal relationships and mutual respect are essential to building trust within the Hispanic community, according to Elsa Bustamante, a 2009 Southern Wesleyan University graduate with a master of science in management degree. Even when they are fully bilingual, it can be difficult for Hispanics to navigate through community services, so any individual or organization wishing to reach out to the Hispanic community must be a part of that community to earn their trust.

“For many Hispanics who speak little to no English, arriving into a new culture and environment can create an overwhelming sensation of fear and confusion – they don’t know the language nor do they know the name ‘Goodwill,’” Bustamante said. “Hispanics aren’t going to walk into a service they don’t know about. We have been able to remove much of the language barrier because our Goodwill Job Connections offer bilingual services to the Hispanic community including English as a Second Language (ESL) classes.”

A native of Ecuador and 24-year resident of the U.S., Bustamante is the Hispanic services manager at Goodwill Industries of Middle Georgia and the Central Savannah River Area (CSRA), which includes the cities of Macon and Augusta. In 2010 she was tasked with engaging members of the Hispanic community in 35 Georgia counties who knew little about Goodwill and its services. Since then, Goodwill has gone from serving a handful of Hispanics in Middle Georgia and the CSRA to 1,800 in 2012.

For her efforts, Goodwill recognized Bustamante with the Edgar J. Helms Award for Staff during its international annual delegate assembly meeting

June 2013. Goodwill Industries International President and CEO Jim Gibbons praised Bustamante as someone who “has worked tirelessly to earn the trust of the Hispanic community and to spread the word about Goodwill’s mission.”

Goodwill works with a network of 165 independent, community-based locations in the U.S. and Canada, offering customized job training, employment placement and other services to people who have disabilities, lack education or job experience, or face employment challenges.

Bustamante said that the Hispanic community is the fastest-growing population in the U.S. She adds that companies and organizations should first begin the process of creating an outreach initiative for Hispanics internally.

“To intentionally engage Hispanics, it is important to begin at the top level of an organization. When management fully understands the positive impact of serving the Hispanic population and supports an outreach model, then collaboration across all levels of the organization helps make the model successful,” she said.

Bustamante began working for Goodwill in 1997, and then in 2000, she was recruited by a textile company into a management position. When her company went out of business in 2006, Goodwill invited her to return to work as a member of their Job Connection staff. She feels blessed that, while in this position, she has been able to help find work for many of her former co-workers at that textile company who had been laid off to find work.

It is difficult to make an impact without gaining someone’s trust.

Goodwill
Middle Georgia & the CSRA



MUSIC



BRAEDEN

Kesha

SWU GRADUATE INSPIRES LOVE OF MUSIC IN OTHERS



Southern Wesleyan University music education graduate Braeden Kershner not only inspires his students – he’s an inspiration to others. As a seventh-grader, Kershner wrote “conductor” in a career form where there was a blank for career choice. Just a few years later, he was living a dream few aspiring conductors could imagine. As an 18-year-old, he worked 11 odd jobs, including washing cars and mowing lawns, raising \$10,000 for a Boston Pops fundraiser and earning the chance of a lifetime – to conduct the iconic orchestra. His experience was noted on NBC News, and the Boston Pops helped pay for his college education in return. NBC did a follow-up story about Kershner in 2010 and he was also selected by The Huffington Post as “Greatest Person of the Day” the following year.

A guy with a competitive streak, Kershner got into the Guinness Book of World Records for passing his entire body through a tennis racket a record 22 times in one minute.

After high school, Kershner enlisted in the U.S. Marine Corps and served in the 2nd Marine Division Band in Camp Lejeune, N.C. After serving in the Marines, he attended Southern Wesleyan, where he earned a bachelor’s degree in music education. He went on to earn a master’s degree in education from Indiana Wesleyan University.

“One of the things that strikes me about Braeden is his tremendous motivation and energy to pursue excellence in whatever is before him,” said Darryl Jachens, one of his music professors at SWU. “This drive was evident even when he had a course overload or was experiencing physical difficulties.” Jachens recalled that Kershner chose to student-teach at Wando High School in Mt. Pleasant, whose band program was among the best in the nation.

Chuck Mealy, now retired from Southern Wesleyan’s staff, says Kershner is an individual who would “push the envelope” and go beyond what was expected in his classes, practices and recitals.

“As an alumnus, he has taken the teaching skills he learned in the Education Department with the skills he refined in the Music Department and has developed the premiere music studio on Daniel Island, near Charleston,” Mealy said.

Kershner went on to teach full-time in Charleston County public schools for five years. He has directed the Citadel Gospel Choir and continues to direct music at Holy Trinity Episcopal Church. Kershner has spent 14 years giving private music lessons. His professional affiliations include the Music Teachers National Association (MTNA), the National Association for Music Education (NAfME, formerly MENC), and the Barbershop Harmony Society (BHS). He lives with his wife Julie and their 2-year-old daughter in Charleston.

“IT’S OKAY TO MAKE MISTAKES.
IT’S PART OF THE LEARNING PROCESS.”

Kershner has been able to turn challenges into opportunities. Rather than being at the mercy of budget cuts that could slash away at arts programs, he decided to start his own music-related business, Black Tie Music Academy, which now has two locations in Charleston and enrolls 180 students. He recently started the second location and hired a staff to assist him.

“I decided to make my own economy and go out on my own. I knew if I were 100 percent in charge of educating my own students, they would never see that arts suffer at Black Tie Music Academy,” Kershner said.

Augmenting Kershner’s gifts in leading and motivating musicians is his ability to play all of the band instruments. “I motivate by tricking my students into learning. We do all sorts of games and fun things that teach them the basics I want them to learn,” said Kershner.

A favorite piece of advice Kershner gives his students is “It’s okay to make mistakes. It’s part of the learning process.”

HOMECOMING 2013

On Oct. 25, the new Warrior mascot made his debut during the Men's Soccer game. Bob Cooley, who was the original mascot in 1970, "suited up" as the new mascot. On Oct. 26, Athletic Director Chris Williams, right, honored Cooley and his wife Norma. Thanks to the generosity of Wood and Thomas family members and their friends, the new mascot was dedicated to honor the time and service of Dixon Wood, P.B. Wood and Mary Will Wood Thomas. Highlights of Southern Wesleyan's 2013 Homecoming included several reunion lunches, the screening of a film produced by SWU graduate Dr. Laura Tossey Austin and her husband Chris, an alumni women's basketball game and the crowning of Sully Brevil as Homecoming King and Chynna Douglas as Homecoming Queen.

ALUMNI ASSOCIATION

ANNUAL AWARDS LUNCHEON

HONORING ALUMNUS OF THE YEAR, YOUNG LEADER
AND PROFESSIONAL EXCELLENCE AWARDEES

SATURDAY, APRIL 12, 2014, NOON

THE FOUNDERS BANQUET HALL ON THE UNIVERSITY'S CAMPUS IN CENTRAL

TICKETS ARE \$15 PER PERSON

RSVP BY APRIL 7

TAKING NOMINATIONS NOW THROUGH FEBRUARY 28 FOR

ALUMNUS OF THE YEAR

YOUNG LEADER AWARD

PROFESSIONAL EXCELLENCE AWARDS:

SCHOOL OF BUSINESS, SCHOOL OF EDUCATION, COLLEGE OF ARTS AND SCIENCE

THE ALUMNI CENTER AT SWU

P.O. BOX 1020 SWU BOX 1875

CENTRAL, SC 29630

FOR DETAILS, CONTACT THE ALUMNI CENTER AT
1-800-282-8798, EXT. 5384, OR E-MAIL JCRAIN@SWU.EDU

ALUMNI NEWS

1971

GLENN THOMASON recently graduated from Atlantic Coast Theological Seminary, Daytona Beach, Fla., earning a doctor of philosophy, with a concentration in pastoral ministries.

1974

01 DR. VERNALOWE has been named dean of Eastern Kentucky University's College of Education. Lowe was dean of graduate and professional studies, as well as assistant to the president for institutional effectiveness and strategic planning at Asbury University in Wilmore, Ky. She began as an instructor at Asbury in 1982 and advanced through the ranks to professor, eventually serving as a department chair and then dean of the School of Education. She served as chair of Asbury's education unit from 1992-2009, when the position became a dean position. In 2012, she began serving in her current job. Lowe earned her bachelor's degree in special education and elementary education from Southern Wesleyan University (Central Wesleyan College), her master's degree in the school of psychology in 1980 and her doctoral degree in special education personnel in 1992, both from the University of Kentucky.

1978

02 SHERRY HAITHCOCK was recognized by the South Carolina Athletic Coaches Association as the 2013 SCACA Athletic Director of the Year during a banquet July 28. Coach Haithcock has served Liberty High School for 12 years as athletic director. In addition, she has coached softball and basketball for the Liberty Red Devils. Coach Haithcock was recognized by SCACA for her 35 years in coaching in the State of South Carolina.

1988

REV. ANTHONY CASEY, assistant district superintendent for The Wesleyan Church in South Carolina, recently co-wrote an article titled "Show Courage on Immigration."

1992

COSANDAR GRIFFIN was named the South Carolina Athletic Coaches Association Girls State Track Coach of the Year after coaching Daniel to the Class AAA state title. She was honored July 27 at TD Convention Center in Greenville.

1998

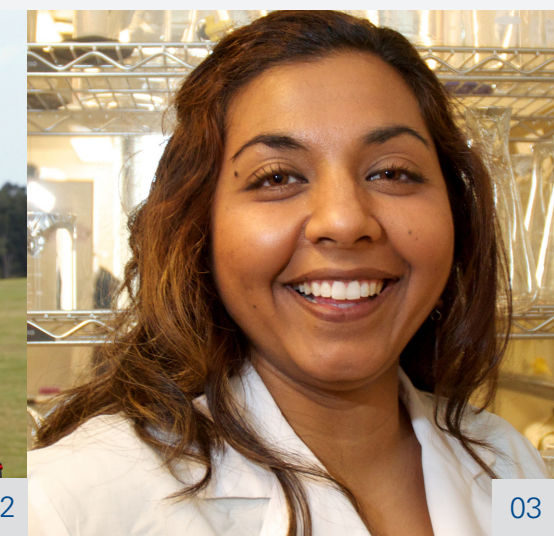
AMY BYRD, a Music graduate, was named Teacher of the Year at R.H. Gettys Middle School, Easley, S.C.



01



02



03

2001

KORI BRASHIER, a biology graduate, became the director of quality and risk management at Springbrook Behavioral Health System in Travelers Rest.

2003

BARRY BURNETT a M.Ed. graduate and current SWU adjunct instructor, was named Teacher of the Year at Clemson Elementary School, Clemson, S.C.

CINDY GRAVELY, an education graduate, was named Teacher of the Year at A.R. Lewis Elementary School, Pickens, S.C.

2004

03 RUPAL SHAH is pursuing a master's degree in public health with a concentration in international health at Boston University's School of Public Health. She will be working with the African Studies Center to conduct research in East Africa. Shah also received a master's degree in microbiology at Clemson University after graduating from Southern Wesleyan University and has been on the staff of Harvard University's School of Public Health for five years.

2005

JASON CONSTANCE, a computer science graduate and a former SWU employee, was designated a naval aviator and selected to fly AH-1W helicopters for the Marine Corps this past February. He was also married June 1.

DAWN RUCKER, a M.Ed. graduate, was named Teacher of the Year at Pickens High School, Pickens, S.C.

KIM WILSON, a M.Ed. graduate, was named Teacher of the Year at Forest Acres Elementary School, Easley, S.C.

2006

LISA PEARMAN, a M.Ed. graduate, was named Teacher of the Year at Dacusville Elementary School, Dacusville, S.C.

TIM SMITH, a Biology Education graduate, was named Teacher of the Year at Tamassee-Salem Middle/High School, Salem, S.C.

2007

04 KATHERINE BOWYER and Jim Hanson were married May 4 at Chau Ram County Park in Westminster, S.C. Katherine was hired as SWU's freshman dorm residence life coordinator in January of 2013. Katherine, Jim, and his daughter Kathryn reside in the apartment of Stuart-Bennett residence hall.

TISH GOODE a M.Ed. graduate, was named Teacher of the Year at Chastain Road Elementary School, Liberty, S.C.

05 ROBIN (LOWE) TAYLOR married Liles Taylor July 13 at Clearwater Beach, Fla. Also, Robin is now the District RTI (Response to Intervention) Coordinator and a Classroom Assessment Coach for the Scott County School System in Kentucky. She spent five years as an elementary classroom teacher (3 years in Wilmore, Ky, and 2 years in Georgetown, Ky). She completed her master's degree in "Teacher as Leader" at Asbury University in 2010 and has recently completed her principal certification also at Asbury University.

MARY ANN MERRITT a M.Ed. graduate, was named Teacher of the Year at Pickens Elementary School, Pickens, S.C.

FELICIA WOODALL was named Teacher of the Year at McKissick Elementary School, Easley, S.C.

2010

MORGAN MELISSA HAMRICK and Jared Stephen Jaynes were married June 22 at the Huguenot Loft. She is a 2010 SWU graduate and is employed at Eastminister Day School in Columbia.

2011

06 CHEN CHEN, a media communication graduate, married John Magee July 6.

ANGIE COSTNER, a M.Ed. graduate, was named Teacher of the Year at Liberty Middle School, Liberty, S.C.

07 Maci Grace Fritts was born June 17 to SWU graduates **PHILLIP** ('09) and **MANDI** ('11) **FRITTS**, weighing 6 lbs. 13 oz. and 20.5 inches.

AMANDA LYLES, a forensic science and chemistry graduate, became a fulltime lab specialist at BASF in Seneca.

2012

08 AMANDA ALMOND, an English graduate, is currently teaching at a mission school in Mozambique. In August, she will enter the master's in TESOL program at Columbia International University.

AMBER LAZENBY, a M.Ed. graduate, was named Teacher of the Year at Hephzibah Elementary School, Hephzibah, Ga.

TYLER MCGRADY, a pre-medicine/pre-dentistry graduate who is in her second year of the master's degree program in public health at the University of Kentucky, had her abstract accepted for presentation this Fall at the American College of Chest Physicians conference.

COURTNEY SELLERS, a forensic science/biology/chemistry graduate, is the new forensic chemist for Horry County Police Dept.

09 AMY SHEPARD a human services graduate, was named Parent Teacher of the Year at Tamassee DAR School, Salem, S.C.

2013

GRACIE CLENDENING and **MATT BLACKWELL** were married May 25. Clendening is a biology major from Pickens who expects to graduate this December. Blackwell is a recent pre-medicine/pre-dentistry graduate, also from Pickens.

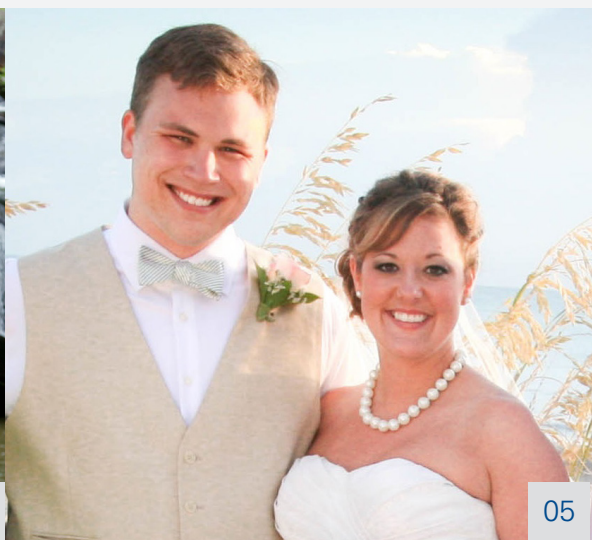
10 NIKOLA LAMBIC, a recent graduate and member of the SWU Men's Basketball Team, was selected as SSAC Male Honor Student-Athlete of the Year. He was recognized as the top male student-athlete in the entire conference.

JACKIE CHAKA, a former SWU student, was named Teacher of the Year at Ambler Elementary School, Pickens, S.C.

KRISTA (COOTS) GARREN married Scotty Garren on Aug. 10. She works as secretary for faculty services and as site assistant for our AGS program here at the main campus. Congratulations and blessings on your marriage!



04



05



06



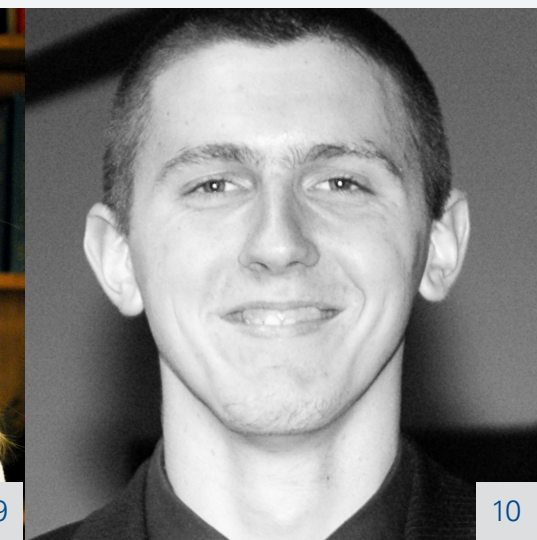
07



08



09



10

IN MEMORIAM



Mary Luck Parks Mitchell (1937)

died peacefully in her Six Mile, SC home July 23. Mary met her husband, Dr. Virgil Allen Mitchell at SWU and they were married that same year. Dr. Mitchell, former general superintendent of The Wesleyan Church and SWU's Alumnus of the Century, passed away in 2006. Mary devoted her life to being the helpful partner, while her husband served as pastor, professor, district superintendent, general superintendent, and college chaplain. Throughout Dr. Mitchell's many years of effective ministry and service, Mary was at his side. Her support, encouragement, discernment and wisdom played a key role in Dr. Mitchell's success in ministry and denominational leadership. Mary was also a member of the Fort Prince George Chapter of the DAR and a former regent. Surviving are Mary's two daughters, Marilyn Mitchell Hollingsworth and Martha Mitchell Funnell of Ann Arbor, Mich.; grandsons, Alton Allen (Annette) Hollingsworth of Michigan; and Adrian Allen (Nga) Funnell of California. Also surviving are two sisters: Ruth Parks Newby and Kate Parks King, both of North Carolina; a brother-in-law, Charles W. Mitchell; and a sister-in-law, Mary Ellen (Elvin) Kelley; all of Simpsonville, SC. Services were held July 27 in the chapel at ALIVE Wesleyan Church in Central, followed by burial at Hillcrest Memorial Park in Pickens. Contributions in Mary's honor may be made to either the Allen and Virgil Mitchell Fund of The Wesleyan Church and sent to the SC District of The Wesleyan Church, PO Box 27275, Greenville, SC 29616 or to the Nicholson-Mitchell Center, Southern Wesleyan University, P.O. Box 1020, Central, SC 29630.

ell's success in ministry and denominational leadership. Mary was also a member of the Fort Prince George Chapter of the DAR and a former regent. Surviving are Mary's two daughters, Marilyn Mitchell Hollingsworth and Martha Mitchell Funnell of Ann Arbor, Mich.; grandsons, Alton Allen (Annette) Hollingsworth of Michigan; and Adrian Allen (Nga) Funnell of California. Also surviving are two sisters: Ruth Parks Newby and Kate Parks King, both of North Carolina; a brother-in-law, Charles W. Mitchell; and a sister-in-law, Mary Ellen (Elvin) Kelley; all of Simpsonville, SC. Services were held July 27 in the chapel at ALIVE Wesleyan Church in Central, followed by burial at Hillcrest Memorial Park in Pickens. Contributions in Mary's honor may be made to either the Allen and Virgil Mitchell Fund of The Wesleyan Church and sent to the SC District of The Wesleyan Church, PO Box 27275, Greenville, SC 29616 or to the Nicholson-Mitchell Center, Southern Wesleyan University, P.O. Box 1020, Central, SC 29630.

1969

PAUL "EDDIE" GLADDEN passed away July 12 from a long battle with cancer. He was a pastor in the S.C. Wesleyan district for more than 20 years and a member of the Wesleyan denomination for most of his life.

2001, 2004

JESSIE R. FREEMAN MANLEY, a Columbia business graduate, passed away May 20. Manley was a 39-year employee of SCANA Corp and was actively involved in several community organizations and her church, North Star Christian Center. She was also a 30 year cancer survivor.

1974

BILL W. CROWE passed away May 3 after courageously battling a brain tumor for 15 months. He was instructor of music and directed Gadsden State Community College Choir. While at Central Wesleyan College, he was a member of the college choir and the traveling group Variation Seven.

Felicia Jackson

Felicia Jackson, a student at the North Augusta Campus, died unexpectedly July 23, 2013, at her residence. Her loss was deeply felt by her family members and SWU classmates. She was a business management major who was a resident support provider for Tri Development Center of Aiken County, an agency that works with disabled citizens. A classmate described her as a team player who had a lively spirit. Her degree, awarded posthumously, will be presented to her family at the December 14 afternoon graduation ceremony.

Krystal Brooke Pearce

Krystal Brooke Pearce, a freshman in the traditional program, died Oct. 3 in a traffic accident. She was a double major in Business Administration and Exercise Science, and was a member of the Women's Tennis Team. Pearce was remembered in a memorial service Oct. 21 on the Central campus of Southern Wesleyan University. Pearce's parents have established a scholarship fund in her memory to help other students achieve their academic dreams.

2013 HONOR ROLL OF DONORS

CITATION CLUB GIVING LEVEL: \$10,000+

12Stone Church Inc., Lawrenceville, GA
Advance SC LLC Education Program,
Greenville, SC

Dr. and Mrs. Joseph M. Atcheson
Dr. and Mrs. John H. Atcheson
Atcheson Dental, Inc., Six Mile, SC
Mr. and Mrs. D. Mike Chambers
Mr. and Mrs. Samuel B. Cole
Mr. and Mrs. Jeffrey W. Dennis
Mr. Vick B. Dixon
Edwards Auto Sales Company, Inc.,
Walhalla, SC

Mr. and Mrs. Robert L. Edwards
Fowler Corporation, Anderson, SC,
Mr. Time Fowler

Barney D. Jones Estate
Estate, Robert M. Clayton
First Citizens Bank, Clemson, SC
Mr. and Mrs. Larry E. Hooks
Dr. and Mrs. G. Earl Hydrick
Dr. and Mrs. Charles L. Joiner
Mr. and Mrs. Henry F. Shigley
South Carolina Independent Colleges
& Univerties, Inc., Columbia, SC

The Duke Energy Foundation,
Charlotte, NC
The Wesleyan Church - NC West District
Mr. and Mrs. Gary Voncannon
Dr. and Mrs. Todd S. Voss

LEGACY CLUB GIVING LEVEL: \$5,000-\$9,999

Mr. and Mrs. Marty L. Atcheson
Mrs. Ellen J. Belliveau
Mr. and Mrs. Edward Bryson
Dr. Malcolm E. Ellis
Mr. Darl L. Fowler
Mr. Russell J. Guffee

Mr. Ronald E. Hale
Mr. and Mrs. Timothy A. Hamby
Heritage Synthetic Turf, Anderson, SC
Mr. Scott Giles

Mrs. Faith N. Hobson
Mr. and Mrs. Donald E. Jennings
Mr. and Mrs. David L. Jennings
Dr. and Mrs. Martin LaBar
Mr. Dale and Mrs. Julia Lappin
Mr. Bryant and Dr. Sandra McLendon
Mrs. Mary P. Mitchell
Mrs. Florence M. Parker
Mr. and Mrs. Chad E. Peters
Mr. and Mrs. Donald E. Schaupp
Mr. Keith W. Smith
Dr. and Mrs. Bruce Allen Snyder

TRUSTEES CLUB GIVING LEVEL: \$2,500-\$4,999

Bank of America, Charlotte, NC
Dr. and Mrs. Joe Brockinton
Brooksville Wesleyan Church, NC
Mr. and Mrs. Donald L. Carr
Community Foundation Gaston County,
Inc., NC

Rev. and Mrs. Morris Davis
Mrs. Martha M. Funnell
Huffman & Associates, Inc., Greenville, SC,
Mr. Coy Huffman

Mary Faith G. Jennings Estate
Drs. Billy and Gloria Jones
Mr. and Mrs. Rock McCaskill
Rev. and Mrs. Walter E. McKee, Jr.
Mr. James and Mrs. Sheryl Medders
Mrs. Hardie D. Medders
Dr. and Mrs. Marlin B. Mull

Ms. Sharon E. Pierce
Mr. and Mrs. Hershell A. Pruitt
Ram, Greer, SC
Mrs. Mary A. Ramsey
Dr. and Mrs. Mickey Rickman
Ross Insurance Agency, LLC

Mr. and Mrs. John B. Ross
Mrs. Anne C. Sheriff
Dr. and Mrs. Walt B. Sinnamon
Mr. and Mrs. Herschel A. Smith
Trehel Corporation, Clemson, SC
Mr. and Mrs. D. Kenneth Whitener
Whitener & Pettigrew, LLC, Clemson, SC
Dr. and Mrs. Paul B. Wood
Mr. and Mrs. Julian H. Yelton, Jr

PRESIDENT'S CLUB GIVING LEVEL: \$1,000-\$2,499

ALIVE Wesleyan Church, Central, SC
Mr. Michael and Judge Sherry Alloway
Mr. and Mrs. J.D. Andrews
Mr. and Mrs. Gary Arrowood
Mr. and Mrs. Robert M. Ballentine
Baywood Wesleyan Church, Galax, VA
Rev. and Mrs. Paul Randall Belcher
Dr. and Mrs. Daniel A. Berry
Dr. and Mrs. Robert E. Black
Boiling Springs First Baptist Church,
Spartanburg, SC

Mr. and Mrs. Michael J. Bonham
Mr. David Bradshaw
Mr. and Mrs. Ronald L. Brank
Brevard Wesleyan Church, NC
Dr. and Mrs. James B. Bross
Mr. and Mrs. Ed T. Bryant
Dr. and Mrs. Royce Caines
Dr. and Mrs. E. Keith Carroll
Mr. and Mrs. Thomas H. Cayce

Mr. Lawrence A. Clayton
Mrs. Patricia Collins
Mr. and Mrs. Don Costello
Dr. and Mrs. Daryl D. Couch
Mr. and Mrs. Alton B. Cumbie
Rev. and Mrs. Kenneth D. Dill
Ms. Wanda Dittman
Dr. and Mrs. Brad L. Fipps
First Wesleyan Church of Bessemer City, NC
Mr. and Mrs. W. Scott Frost

Dr. and Mrs. Daniel E. Gentry
Goldstein Charity Golf Tournament,
Clemson, SC

Dr. Marianne Gonlag
Dr. Lellaree Greene
Ms. Jacqueline Marie Guiry
Mrs. Wanda W. Hagood
Rev. Tom and Dr. Lisa Harding
Mr. and Mrs. J. C. Hayes
Faith Promise-Hayworth Wesleyan
Church, NC

High Point Area Wesleyan Men, NC
Mr. and Mrs. J. Paul Hilson
Ms. Susan Tan Hoffpauir

Mr. David K. Hoover
Mrs. Ellen W. Hurst
Dr. and Mrs. R. Keith Iddings
Mrs. Carmella Johnson Coleman
Mrs. Mary E. Kelley
Mr. and Mrs. Bradley Keown
Life Journey Church, Pelzer, SC

Mr. and Mrs. Larry Looper
Rev. and Mrs. Jerry L. Lumston
Mr. and Mrs. Charles W. Lusk
Dr. and Mrs. Wilbur J. Mahony
Dr. Nancy B. Mann

Mr. Thomas R. Matherlee
Drs. Chuck and Betty Mealy
Rev. and Mrs. Donald W. Milstead
Mrs. Yvonne H. Morgan
Mr. and Mrs. Warren Morgan
Dr. and Mrs. Robert R. Nash
Rev. John William Ott
Mr. W. H. Overstreet
The Parkette, Pickens, SC

Mr. and Mrs. Gary B. Phaup
Mr. Marvin M. Phaup
Piedmont Pest Control, Laurens, SC
Rev. and Mrs. T. Wayne Preusz
Rev. and Mrs. Buddy Rampey
Mr. and Mrs. Charles C. Rone
Mr. Chip and Dr. Susan Rouse
SC Department of Public Safety
Dr. and Mrs. Paul C. Schleifer
D. L. Scurry Foundation, Columbia, SC

Mr. Marion Wayne Sexton
Rev. and Mrs. James C. Smith
Mr. and Mrs. Levon Stack
Mrs. Bobbie Jean Strand
Rev. and Mrs. Patrick J. Styers
Mr. and Mrs. Charles A. Tegen

Mr. and Mrs. Edgar B. Thomas
Rev. and Mrs. David M. Tolan
Ms. Frances Tomlin
Trinity Wesleyan Church, Central, SC
Mr. Grant and Dr. Jeannie Trudel
Ms. Maree Turner
Ms. Stacy D. Volkert
Mrs. Clara W. Warnke
Mr. and Mrs. W. Weston Warren
Mr. William W. Wassmann
Dr. Harold M. Waters
Ms. Barbara Watts
Drs. Jonathan and Karen Watts
Mr. and Mrs. J. Dan Wood

UNIVERSITY CLUB GIVING LEVEL: \$500-\$999

Rev. and Mrs. Phillip E. Baily
Mr. and Mrs. Kenneth Bauer
Mr. and Mrs. Ron Black
Dr. and Mrs. James C. Blackburn
Ms. Kathryn E. Bongard
Mr. and Mrs. Devon R. Broome
Mr. James M. Brown
Rev. and Mrs. James Wesley Brown
Mr. and Mrs. Robin Lee Bryant
Dr. and Mrs. Don R. Campbell
Dr. Louise H. Carlton
Mrs. Andria Elaine Carpenter
Center for Scholarship Admin., Inc.,
Taylors, SC

Mr. William H. Clayton
Ms. Krista M. Coots Garren
Mr. and Mrs. Ray Crawford
Mr. and Mrs. Billy T. Davis
Mr. and Mrs. Kenneth D. Dickens
Dr. and Mrs. Keith East
Emmanuel Wesleyan Church, Roanoke, VA
Faith Wesleyan Church, Lakewood, FL

First Baptist Church, Sylacauga, AL
First Wesleyan Church of Kannapolis, NC
Dr. and Mrs. Kenneth Foutz
Mr. and Mrs. Larry J. Fowler
Mr. and Mrs. Randy J. Garner
Ms. Ruth J. Gonlag
Greenwood Hills Wesleyan Church,
High Point, NC

Mr. and Mrs. Russell K. Gunsalus
Mr. Michael and Rev. Priscilla Hammond
Dr. and Mrs. Kenneth R. Heer

Helen Batson Sunday School Class,
Pickens, SC
Mr. Eddie V. Horne
Dr. and Mrs. Marlin R. Hotle
Mrs. Naomi D. Hughey
Dr. and Mrs. Paul B. Jordan
Mr. Curtis Lee
Liberty Wesleyan Church, Summerfield, NC
Mr. and Mrs. Ron Lippard
Mr. and Mrs. Clifford R. Lovin
Mrs. Geraldine F. Masters
Mr. and Mrs. Donald R. McClellan
Mrs. Martha D. Mishoe
Mr. and Mrs. Wilford C. Morris
Mountain Road Wesleyan Church,
Glenn Allen, VA
New Life Church of the Nazarene,
Oakridge, TN

Mr. James Rodger Owens
Ms. Stefani Denise Patterson
Rev. William Jonathan Payne
Penn Jersey District of The Wesleyan Church
Mr. and Mrs. J. Marvin Quarles, Sr.
Rev. and Mrs. W. Marshall Rampey, Sr.
Mrs. Katie Wood Ray

Dr. and Mrs. Hal G. Robbins
Mr. and Mrs. James T. Roberts
SC District of The Wesleyan Church
Mr. and Mrs. Darren E. Schaupp
Dr. and Mrs. James L. Schmutz
Ms. Ruth O. Smyrl
Dr. and Mrs. David J. Spittal
Mr. and Mrs. Richard A. Stanley, Jr.
Stewart Enterprises, Jefferson, LA
Dr. Brian D. Swords

United Wesleyan Church, Easley, SC
Mr. and Mrs. Robert L. Wassmann
Mr. and Mrs. Michael D. Whitney
Ms. Courtney Chevelle Williams
Mr. and Mrs. Christopher R. Williams

CENTURY CLUB GIVING LEVEL: \$100-\$499

Mrs. Joni Lesley Addis
Advanced Prosthetics of Easley, Inc.
Mr. and Mrs. David M. Albertson
Mr. and Mrs. Kenneth C. Alexander
Mr. and Mrs. Lee R. Allen
Mr. and Mrs. Joel Edward Allgood
Rev. and Mrs. Frederick D. Andrews

Asheville Wesleyan Church, NC
 Dr. Laura L. Austin
 Dr. Stephen F. Babby
 Ms. Mary Beth Bagley
 Mr. and Mrs. Tony Baker
 Mr. and Mrs. Donald F. Baker
 Mrs. Elizabeth J. Baker
 Mrs. Marna Elizabeth Beard
 Ms. Elizabeth Jo Bentley
 Mr. and Mrs. William L. Benton
 Ms. Barbara A. Berry
 Mr. Matthew C. Bielecki
 Mr. Arthur B. Bieling
 Mr. and Mrs. O. Daniels Black
 Dr. and Mrs. Watson H. Black
 Mr. and Mrs. Quentin Black
 Blacksburg First Wesleyan Church, VA
 Mrs. Regina Bolding Harned
 Mr. and Mrs. Hugh L. Boles
 Mrs. Sandra Bolick
 Mr. and Mrs. Daniel Boone
 Mrs. Celeste N. Boudolf
 Ms. Ashley Christine Bowers
 Mrs. Rosalyn S. Bowman
 Mr. and Mrs. Arlan T. Brady
 Mr. Bobby Brown
 Mr. Justin Brown
 Mrs. Lisa G. Bryant
 Hon. Susan R. Burch
 Mr. and Mrs. Greg K. Burger
 Mr. and Mrs. Wilbur Burgin
 Mr. and Mrs. Mark D. Burns
 Mr. Jim Bush
 Ms. Vonda Butler
 Mr. and Mrs. John T. Caldwell
 Mrs. Peggy Ann Camp
 Mr. Mike Cappola
 Rev. and Mrs. James M. Capps
 Carolina Ad Specialty, Lyman, SC
 Dr. and Mrs. Justin Crawford Carter
 Mr. Andrew R. Cato
 Central Wesleyan Church, Thomasville, NC
 Mr. George Chastain
 Mr. and Mrs. Farrell Childers
 Mrs. Jeanette M. Childs
 Christ Wesleyan Church, Greensboro, NC
 Mrs. Doris C. McCracken Clark
 Mr. and Mrs. James W. Clark
 Clement Memorial Wesleyan Church,
 Hurt, VA
 Mr. N. Q. Cline

Mr. and Mrs. John H. Cole, Jr.
 College Wesleyan Church, Marion, IN
 Comfort Inn, Clemson, SC
 Ms. Ann L. Coogler
 Mr. Marcus Andrew Cook
 Mr. and Mrs. Bobby Cooley
 Ms. Jill Cooper
 Mr. and Mrs. Ryan Corbin
 Mr. and Mrs. Richard E. Cotton
 Mr. and Mrs. Thomas E. Cowart
 Mr. David W. Cox
 Mr. Joseph D. Craig
 Mr. and Mrs. Jerry Crain
 Ms. Laura S. Crenshaw
 CSI-Computer Software Innovations,
 Inc., Easley, SC
 Ms. Lu A. Cushman
 Mr. and Mrs. Walter H. Davison
 Rev. Donald A. Dawalt
 Mr. and Mrs. Roy A. DeBolt
 Mr. James C. Dill
 Mrs. Barbara S. Dixon
 Scott Dover Attorney at Law,
 Mr. and Mrs. Scott Dover
 Steven Douglas Draper
 Mr. Dean DuVall
 Mr. James Dykhouse, CPA
 Rev. and Mrs. Lewis B. Edwards
 Mr. Leon Ellis
 Ms. Eloise Hunter Estate
 Mr. Kevin T. Etheredge
 Mrs. Martha S. Evatt
 Faith Wesleyan Church, Greensboro, NC
 Mr. and Mrs. Harry C. Farmer
 Mr. John Faubert
 Mr. Brandon Paul Faulkenberry
 Mr. Dean S. Fichtel
 Mrs. Susan F. Finley
 Mr. Ray Flasch
 Ms. Louisa Ready Fleming
 Rev. and Mrs. Leon D. Fowler
 Mr. and Mrs. Darl L. Fowler, Jr.
 Mr. and Mrs. John D. Fralin
 Mrs. Janet M. Freeman
 Mr. and Mrs. David O. Funderburk
 Mr. and Mrs. Alfred S. Furr
 Mr. Corey Roger Gareri
 Mr. and Mrs. George B. Garman
 Mr. Donald C. Garrett
 Mr. and Mrs. Lyle R. Geist
 Mr. and Mrs. Reginald E. Gentry

Mr. and Mrs. Richard F. Gettings
 Ms. Janet Giles
 Mrs. Betty B. Goforth
 Mr. Paul Levi Goldstein
 Mr. and Mrs. Marvin W. Gordon
 Mr. Steve Graham
 Grant Body Shop, Inc., Pickens, SC
 Dr. and Mrs. Velon H. Gray
 Mr. and Mrs. James G. Green
 Dr. and Mrs. Harold R. Gunsalus
 Ms. Doris R. Gunsalus
 Mr. and Mrs. James R. Gurley
 Mrs. Tonya B. Hagmaier
 Dr. Lee M. Haines
 Mr. Bobby Haithcock
 Ms. Sharon D. Haithcock
 Dr. Linda Crawley Hall
 Ms. Lisa Monette Hall
 Ms. Kathy Michelle Hall
 Ms. Katherine Sarah Hanson
 Mr. and Mrs. William M. Hardin
 Mr. William B. Harley, Jr.
 Mr. and Mrs. Derrick Hart
 Mr. Brantley Hart
 Mrs. Billie Faye Harvey
 Mr. and Mrs. Joseph Hayes
 Mr. Mike Hayes
 Mr. and Mrs. John C. Hearn
 Mrs. Elizabeth F. Hedrick
 Ms. Laura B. Helfert
 Ms. Jenna Lee Henderson
 Mrs. Thelma R. Hendren
 Dr. Laurie Giles Hillstock
 Rev. and Mrs. J. Michael Hilson
 Mr. and Mrs. Gilbert H. Hine
 Mr. and Mrs. R. Kedar Hodges
 Ms. Deborah L. Holcombe
 Mr. and Mrs. Robert P. Holcombe
 Ms. Rachel Homler
 Mr. and Mrs. Alan E. Howard
 Ms. Thelma W. Howard
 Mr. Olin D. Hunter
 Ms. Pamela L. Huss
 Mr. and Mrs. Carroll P. Hutcheson
 Ms. Brianna Ashley Hydes
 Mrs. Peggy L. Iannolo
 Indexx Incorporated Printing Solutions,
 Greenville, SC
 Mrs. Carolyn M. Ivey
 Rev. and Mrs. William D. James
 Dr. and Mrs. Thomas E. Jennings

Mrs. Gail C. Jones
 Mr. and Mrs. Charles R. Jones
 Ms. Veronica E. Jones
 Mr. and Mrs. Larry Jones
 Rev. and Mrs. David Livingston Keith
 Revs. Bob and Gail Kerstetter
 Mrs. Joanne Marie Kindley
 Dr. Carl N. King
 Mr. and Mrs. David L. King
 Mr. Richard E. King
 Mr. and Mrs. Wilton King
 Mrs. Margaret Cockman Kitchel
 Dr. and Mrs. Lee E. Kizer
 Mrs. Virginia Kohler
 Mr. and Mrs. David A. Ladd
 Mr. Roger D. Lampkin
 Mr. Ray A. Lattimore
 Mr. Edwin Richard Lawton
 Mr. and Mrs. Phillip William Lefter
 Mr. and Mrs. Ernest R. Leopard
 Rev. and Mrs. Daniel E. LeRoy
 Mrs. Lillie G. Lewis
 Liberty Family Pharmacy, SC
 Mr. and Mrs. Arthur J. Lipina
 Mr. Charles Little
 Mr. and Mrs. Daniel N. Loggins
 Ms. Lynn A. Lollis
 Ms. Virginia Losey
 Ms. Nathalie Ann Lubin
 Mr. William Scott Lucas
 Lyman Wesleyan Church, SC
 Lyman Wesleyan Women, SC
 Mrs. Jennifer Manczko
 Mr. Justin Thomas Maner
 Mr. and Mrs. C V Marchbanks
 Mr. William B. Martin, Jr.
 Rev. Ronald C. McClung
 Mr. Evan McDonald
 Mr. Michael A. McGee
 Mrs. Deborah McKamey
 Dr. and Mrs. Roger W. McKenzie
 Mr. James David McMenimen
 Mr. Dillard E. Medford
 Mr. and Mrs. Stephen P. Miller
 Milliken and Company, Spartanburg, SC
 Ms. Mary Misenheimer
 Mr. and Mrs. Al Molloseau
 Mr. and Mrs. Tom Morgan
 Mount Airy Wesleyan Church, NC
 Mr. and Mrs. William Gordon Mullinax
 Mr. and Mrs. John Mullinax

Dr. and Mrs. Rocky Nation
 NC West Wesleyan Women
 Mrs. Rebecca J. Newby
 Norfolk/Southern Foundation, VA
 North Carolina East District of
 The Wesleyan Church
 North Carolina West District of
 The Wesleyan Church
 Mrs. Virginia Norwood
 Mrs. Timothy Kevin O'Callaghan
 Old Zion Wesleyan Church, Tabor City, NC
 Mrs. Ruth Rampey O'Shea
 Mr. Travis Oswald
 Mr. Christopher J. Painter
 Mrs. Norma C. Palmer
 Mr. and Mrs. Thomas N. Parham
 Mr. and Mrs. Wesley Phillips
 Mr. and Mrs. J. Edwin Pilgrim
 Mr. and Mrs. Mike W. Preusz
 Providence Wesleyan Church,
 High Point, NC
 Dr. and Mrs. Everett Putney
 Mr. and Mrs. Nathan Putney
 Mrs. Myrtle Cude Radford
 Ms. Shelvie J. Ramsey
 Dr. Valerie R. Ramsey
 Dr. William J. Raynor
 Mr. and Mrs. Gregory Reynolds
 Mr. Edward H. Rich
 Mrs. Evelyn T. Rickman
 Mr. Larry Roberson
 Mr. and Mrs. Alvin K. Robinson
 Rockwood Wesleyan Church, Rockwood, TN
 Mr. Eric Rollins
 Dr. and Mrs. George M. Rupp
 Mr. Scott Sanders
 Mrs. Priscilla Andrews Sanders
 Sardis Den, Inc. Clemson, SC
 Mr. and Mrs. Ralph Sarlin
 Mrs. Brenda K. Satterfield
 Mr. Dennis Schwab
 Ms. Clara B. Scott
 Ms. Nancy S. Scruggs
 Mr. and Mrs. Robert E. Sears
 Mr. Tommy Seigler
 Mr. Christian W. Selle
 Ms. Maggie Seymore
 Sharp Business Systems, Greenville, SC
 Ms. Rhonda D. Sheets
 Ms. Shelby J. Simmons
 Mr. and Mrs. Glenon A. Simpson

Ms. Ollie M. Smith
 Mr. and Mrs. Timothy Smith
 South Coastal District of The
 Wesleyan Church
 Mr. and Mrs. Joseph W. Stallings
 Mr. John N. Stewart
 Ms. Virginia S. Stine
 Mr. and Mrs. Jerry D. Swaney
 Rev. John Q. Taylor
 Mr. and Mrs. Joseph E. Taylor
 Ms. Kathleen R. Tegen
 Mr. and Mrs. Jason Andrew Tegen
 Mr. Kenneth L. Thomas
 Mr. Stanley Thompson
 Mr. Leo Tilley
 Rev. and Mrs. Wayne E. Tippey
 Mr. and Mrs. Milton Todd
 Mr. and Mrs. Maurice Tolan
 Trophies Unlimited, Easley, SC
 Mr. and Mrs. John W. Vess
 Ms. Patricia A. Waddell
 Mr. James R. Waldrop
 Mr. Larry T. Ward
 Mr. and Mrs. Danny Waters
 Ms. Lisa Kim Welborn
 Dr. Theodore C. West
 Mr. Gregory Ryan Westmoreland
 Mr. Paul B. Wickensimer
 Rev. and Mrs. James E. Wiggins
 Mr. and Mrs. Paul L. Wilcox
 Dr. and Mrs. Woodie Williams
 Mr. Charlie H.R. Williams
 Dr. and Mrs. Wilbur G. Williams
 Mrs. Joy P. Willis
 Mr. G. Wayne Wilson
 Dr. and Mrs. Don D. Wood
 Dr. and Mrs. D. Clifton Wood
 Mr. and Mrs. Pete H. Wood
 Mr. and Mrs. Andrew P. Wood
 Mrs. Donna Lynn Wood
 Mrs. Barbara J. Woody
 Mrs. Carolyn K. Wooley
 Dr. Ben Xie
 Mr. and Mrs. Greg E. Young

HERITAGE CLUB

GIVING LEVEL: \$1-\$99

3 Spoons Yougurt of Clemson, LLC, SC
 Ms. Miriam R Adderholdt-Elliott
 Mr. Ryan Dwain Addison

Kaitlyn Francine Aldrich
 Mr. and Mrs. James O. Alford
 Mr. and Mrs. Thomas A. Allred
 Mr. and Mrs. J. D. Almond
 Ms. Virginia W. Anderson
 Ms. Allyson R. Andrews
 Mr. and Mrs. David Wayne Andrews
 Mrs. Mary Sellers Andrews
 Ms. Myra A. Armistead
 AT&T Foundation, Princeton, NJ
 Mr. and Mrs. James A. Avant
 Mr. and Mrs. E. Stanley Banker
 Mr. and Mrs. John Basham
 Mr. David and Mrs. Mae Wade Bayse
 Mr. D. L. Bayse
 Mr. Greg E. Bearden
 Beeson-Rosier Group, Manhattan, KS
 Mr. and Mrs. Patrick A. Bennett
 Ms. Sheila M. Benton
 Mr. and Mrs. Elton Beougher
 Mr. Gene A. Best
 Mrs. Helen Binns
 Ms. Janice B. Bishop
 Ms. Emily Caroline Bloxdorf
 Mr. James Douglas Boggs
 Mr. Tim Bolding
 Mr. and Mrs. Glen Bolding
 Mr. and Mrs. Robert B. Bowling
 Dr. and Mrs. Ronald R. Brannon
 Mr. Sammy D. Bratcher
 Mr. and Mrs. Robert C. Brayerton
 Ms. Susan C. Brazelle
 Mrs. Shirley B. Brown
 Ms. Carol D. Broyhill
 Mr. Joe Bryant
 Mrs. Susan M. Bullard
 Ms. Gayle O. Bumgarner
 Carolina Chaos Baseball, Inc., Clemson, SC
 Mr. and Mrs. Joseph H. Carrigan
 Mr. Ethan Joseph Cashwell
 Rev. and Mrs. Howard B. Castle
 Chick-Fit-A at Clemson, FSU, SC
 Ms. Nellie C. Cloninger
 Mr. and Mrs. Elijah A. Cockman
 Mr. John Cockman
 Mrs. Wanda G. Cody
 Mr. Jeff Costello
 Ms. Tamera Crowell
 Mr. Lonnie H Daniel
 Mr. John William Davis
 Mr. Edwin Davis

Mrs. Jean Day
 Mr. Abraham Awuol Deng
 Mrs. Allene W. DeWeese
 Mrs. Carolyn W. Dickson
 Mr. and Mrs. Ralph Dorsett
 Mr. Bob DuBose
 Mrs. Cathy M. Earlywine
 Dr. Rich Eckley
 Mrs. Lisa S. Eister
 Emmanuel Wesleyan Women, Lexington, NC
 Hon. Wendy Enochs
 Ms. Barbara A. Erceg
 Mr. and Mrs. William Eugene Evans
 Dr. Marie Evatt
 Mr. Stephen L. Everhart
 Mrs. Sarah Frances Finch
 Firestone Wesleyan Church, Gastonia, NC
 First Wesleyan Church, Bessemer City, NC
 Mr. and Mrs. Timothy J. Flanagan
 Mrs. Doris M. Flint
 Mr. and Mrs. James R. Floyd
 Mrs. Syvilla M. Fortune
 Mrs. Velma Fowler
 Mr. and Mrs. William French
 Ms. Hellen Rae Gable
 Mr. Barry C. Garrett
 Ms. Ruth Gearren
 Ms. Emily Elizabeth Germain
 Mr. and Mrs. L. Dale Gilbert
 Mr. Joseph E. Goings
 Mr. Francisco Luis Gonzalez
 Ms. Sonya B. Goodman
 Mr. and Mrs. Steve Gray
 Mr. Rion Groomes
 Mr. and Mrs. Scotty D. Gullede
 Ms. Heather Hamilton, Inc., Port Orange, FL
 Mrs. Nikole Thrasher Hanson
 Hardees, Central, SC
 Mr. and Mrs. Donald L. Harder
 Mr. Matthew Kyle Harper
 Mrs. Una R. Harvey
 Mr. Robert J. Hawk
 Mr. Mark Hawkins
 Ms. Donna Heasley
 Mr. and Mrs. Philip L. Hendricks
 Mr. and Mrs. Robert L. Hettich
 Mrs. Zelma Higgins
 Mrs. Carol P. Holcombe
 Mr. Chris and Mrs. Charlen Honnen
 Dr. Charlotte Thompson Houke
 Mr. and Mrs. Bryan Kevin Howard

Mr. O K. Jennings
 Mr. John Johnson
 Mr. David Dean Jones
 Ms. Danita L. Jones
 Mr. and Mrs. Henry D. Julian
 Mr. Brian Kaminer
 Mr. and Mrs. Robert D. Kaminer
 Mr. Donald Karns
 Mr. Gregory Keatley
 Mr. and Mrs. Palmer E. Keaton
 Mrs. Opal Keeran
 Mr. and Mrs. Peter Keller
 Dr. and Mrs. Ronald D. Kelly
 Mr. Dennis R. Kendrick
 Mr. and Mrs. A. J. Kendrick
 Mr. and Mrs. Fred G. King
 Ms. Erin Burts King
 Ms. Kimberly A. Klemm
 Mr. and Mrs. Dean Kring
 Mr. Ekow Kennedy Kwofie
 Mr. David Nicholas Ladd
 Mrs. Sheila Langnecker
 Mr. and Mrs. Tom A. Larson
 Dr. Barbara Panhorst Lassiter
 Mrs. Bronwyn K. Lester
 Mr. W. Harold Lineberger
 Lockheed Martin Corporation,
 Cherry Hill, NJ
 Ms. Jackie Loggins
 Mr. and Mrs. Larry F. Looper
 Drs. Milton and Verna Lowe
 Mr. and Mrs. T. Joseph Lusk
 Mrs. Robin L. Mahony
 Mrs. Alice J. Manczko
 Manufacturers Tool & Die, Co, Inc.,
 Spenceport, NY
 Mr. and Mrs. David Rex Martens
 Mr. and Mrs. Clyde Martin
 Ms. Jennifer J. McAlister
 Ms. Mary Earline McDaniel
 Mr. and Mrs. Sam McDonald
 Ms. Cindy A. McDonald
 Mr. and Mrs. Larry A. McGlashan
 Ms. Thelma Jean McKenzie
 Mrs. Janie C. McKinney
 Ms. Jennifer M. Meece
 Memory Gardens, Inc., Clemson, SC
 Ms. Patricia C. Metcalf
 Mrs. Patricia P. Milam
 Mrs. Verna C. Mitchell
 Mrs. Diana Lynn Moody

MSW Security Solutions, Inc., Belton, SC
 Mr. and Mrs. Don Mueller
 Ms. Edythe H. H. Mullis
 Mrs. Agatha E. Murphy
 Mrs. Sarah C. Myers
 Mrs. Judy M. Nance
 Mr. Curtis Newman
 Mr. George "Donald" D. Newton
 Mr. and Mrs. Tommy Joe Neyman
 Ms. Melinda Nicholson
 Mrs. April V. Nieves
 Mr. Kenneth E. Nix
 Mr. Alfred Cleveland Nix
 Mr. and Mrs. Greg Nodine
 Mr. Warren J. Owens
 Ms. Elizabeth Marie Oxendine
 Mr. and Mrs. Phillip Milton Paradise
 Mr. and Mrs. Joey D. Parris
 Mrs. Jenny H. Patterson
 Mr. and Mrs. Robert Payne
 Rev. and Mrs. William F. Peed
 Ms. Katherine Petry
 Pickens Sav. & Loan Assn., F.A., SC
 Pickens View Wesleyan Church, SC
 Mr. and Mrs. Robert E. Pittman
 Mrs. Gail A. Pohl
 Ms. Beverly G. Poissant
 Mrs. Sandra Randolph J. Poppell
 Ms. Ruth Anne Potts
 Mrs. Ruth M. Pruitt
 Dr. William F. Purkey
 Mr. and Mrs. William G. Rainey
 Dr. and Mrs. Leo Record
 Mr. Chip Reeves
 Ms. Sandra Rickman
 Mrs. Fonda A. Rist
 Ms. Marlene Robel
 Mrs. Sandra L. Robinson
 Mr. and Mrs. Keith D. Robinson
 Mr. and Mrs. Camilo Rodriguez
 Ms. Angela R. Rogalski
 Mr. and Mrs. Wade Michael Rogers
 Mr. and Mrs. Jeff Rosenberger
 Dr. Melanie Gibson Rowell
 Mr. Blake Sanders
 Ms. Mary B. Sanders
 Mr. Richard Blake Sanders
 Mr. Mark R. Santi
 Dr. and Mrs. Joe C. Sawyer
 Mrs. Helen J. Schenck
 Mr. and Mrs. Glenn R. Seward

Mr. Mark S. Shifflet
 Mr. Richard Byron Shirley
 Mr. and Mrs. Fred F. Short
 Ms. Betty Sims
 Mr. and Mrs. Jefferson B. Slagle
 Mr. and Mrs. Claude L. Smethers
 Mr. A. O. Smith
 Ms. Peggy M. Smith
 Mr. and Mrs. Kenneth M. Smith
 Sonic Drive-in, Clemson, SC
 Sophia's Alterations, Easley, SC
 Ms. Anna M, Speaks
 Mrs. Vriginia Cockman Speaks
 Mr. Ronald P. Spinharney
 Ms. Gladys Stewart
 Mr. and Mrs. Sammy H. Stewart, Jr.
 Mr. and Mrs. Brian N. Strickland
 Mr. Joel Travis Swaynham
 Mrs. Sandra D. Swift
 Rev. and Mrs. Samuel R. Swinney
 Mrs. Martha S. Swordfager
 Dr. Richard N. Sykes
 Dr. Victoria B. Teague
 Ms. Annie Tribble
 Rev. and Mrs. Carroll M. Upton
 Village Inn, Pickens, SC
 Mrs. Marla A. Walker
 Ms. Charlotte Q. Walker
 Mrs. Edwin B. Wallace
 Ms. Betty Lou Washburn
 Mrs. Erin Miriam Washington
 Ms. Geraldine C. Waterhouse
 Mr. Jeffrey Wayne Watson
 Western Sizzlin, Clemson, SC
 Mr. and Mrs. Ray White
 Ms. Robbie Ann Wade White
 Dr. and Mrs. Boyce Whitman
 Mr. and Mrs. Robbie W. Wiggins
 Mr. and Mrs. James R. Wilder
 Mr. and Mrs. Donn A. Williams
 Ms. Lisa L. Williams
 Mr. David J. Williams
 Wingard Jewelers, Easley, SC
 Mr. Melvin Witcher
 Mrs. Ruth S. Woo

ALUMNI

2013

Ekow Kwofie

2012

Ethan Cashwell
 Sammy H. Stewart, Jr.
 Lisa L. Williams
 Greg E. Young

2011

Kathryn E. Bongard
 Regina Bolding Harned
 Thomas Neely Parham
 Joel Travis Swaynham

2010

Devon R. Broome
 Vonda Butler
 Lisa Corbin
 Dana L. Frost
 Laura B. Helfert
 Bryan Kevin Howard
 Roger D. Lampkin
 Deanna P. Tegen

2009

Jennifer Renee Atcheson
 Andrew R. Cato
 Jenna Lee Henderson
 Kimberly A. Klemm
 Elizabeth Marie Oxendine

2008

Kathryn E. Bongard
 Vonda Butler
 Hellen Rae Gable
 Katherine Sarah Hanson
 Warren J. Owens
 Stefani Denise Patterson
 Valeria R. Ramsey

2007

Abraham Awuol Deng
 Joseph E. Goings
 Phillip William Lefter
 Debra Jill Nodine
 Cheryl A. Parris
 Camilo Andres Rodriguez
 Stephanie Ott Rodriguez
 Wade Michael Rogers
 Paul B. Wickensimer
 Amanda S. Young

2006

Joel Edward Allgood
 Elizabeth Payseur Atcheson
 Joseph M. Atcheson

Elizabeth Jo Bentley
Hellen Rae Gable
Emily Elizabeth Germain
Priscilla Hammond
Justin Thomas Maner
Chad E Peters

2005

Lee R. Allen
Joseph E. Goings
Phillip William Lefter
Jennifer M. Meece
Cheryl A. Parris
Jason Andrew Tegen

2004

Jennifer Renee Atcheson
Joy D. Bryant
Roy A. DeBolt
Joey D. Parris
Ruth Anne Potts
Camilo Andres Rodriguez
Gregory Ryan Westmoreland

2003

Mary F. Costello
Dana L. Frost
Deborah H. King
Virginia Kohler
James R. Wilder

2002

Joni Lesley Addis
John H. Atcheson
Paul Randall Belcher
Arlan T. Brady
Scott Frost
Kathy Michelle Hall
Kelley Elaine Tegen

2001

Laura L. Austin
Phillip E. Baily
Tiffany M. Belcher
Carol D. Broyhill
Krista Coots Garren
Barry C. Garrett

1999

Lee R. Allen
Mary F. Costello
Veronica E. Jones
Deborah H. King
Patricia A. Waddell

1998

Arthur B. Bieling
Robert C. Brayerton
Lu A. Cushman
Billy T. Davis
Kenneth R. Heer
Bronwyn K. Lester
Greg E. Young

1997

Corrie M. Brayerton
William M. Hardin
Gail A. Pohl
Angela R. Rogalski
Amanda S. Young

1996

Virginia W. Anderson
Marna Elizabeth Beard
Gayle O. Bumgarner
Wanda G. Cody
Kevin T. Etheredge

1995

Susan C. Brazelle
Vicki K. Hayes
Winnie Molloseau
Robert E. Pittman
Shelvie J. Ramsey
Charles C. Rone
Clara B. Scott
Brian N. Strickland
Brian D. Swords

1994

Leanne Black Broome
Donald L. Harder

1993

Allyson R. Andrews
Sheila M. Benton
Lisa G. Bryant
Edward H. Rich
Andrew P. Wood

1992

Hugh L. Boles
Joy D. Bryant
Robert P. Holcombe
J. Edwin Pilgrim
Melanie Gibson Rowell

1991

James O. Alford

Greg E. Bearden
Gene A. Best
Janice B. Bishop
Thomas L. Harding
James Rodger Owens
Darren E. Schaupp
Peggy M. Smith

1990

Thomas A. Allred
James Michael Hilson
April V. Nieves
Valerie R. Ramsey
Cynthia E. Schaupp
Robbie Ann Wade White

1989

Billie Faye Harvey
Donald R. McClellan
George "Donald" D. Newton
Ruth M. Pruitt
Kenneth L. Thomas
Stacy D. Volkert

1988

Matthew C. Bielecki
Hugh L. Boles
Sonya B. Goodman
Lisa G. Harding
Jeff Rosenberger
John N. Stewart
Melanie A. Strickland

1987

Barbara A. Berry
James Wesley Brown
Ann L. Coogler
Scotty D. Gullede
Deborah L. Holcombe
John W. Vess, Jr.

1986

Lisa S. Eister
John D. Fralin
Curtis Lee
Nancy B. Mann
Jenny H. Patterson

1985

Tammie Faye Alexander
Daniel Boone
Thomas E. Jennings
Jerry L. Lumston
James Medders

Virginia S. Stine
Kelly D. Wood

1984

Randy J. Garner
Jean S. Lumston
Michael W. Preusz
Sandra M. Preusz
Catherine L. Rosenberger
Keith W. Smith

1983

Cynthia L. Garner
Tonya B. Hagmaier
Carolyn M. Ivey
Sheryl S. Medders
Pamela H. Scmutz
Mark S. Shiflet
Victoria B. Teague
Kimberlee W. Wood
J. Dan Wood

1982

Myra A. Armistead
Brad L. Fipps
Alice W. Foutz
Ray A. Lattimore
Daniel N. Loggins
Eric Rollins

1981

Sheryl K. Dennis
Kenneth D. Dill
Jill L. Loggins
Ollie M. Smith
Pete H. Wood

1980

David M. Albertson
James M. Brown
Jeffrey W. Dennis
Kim Dowdy Fowler
Russell J. Guffee
Rachel P. Gullede
Shauna W. Jones
Gregory Reynolds
Kenneth M. Smith
James R. Waldrop

1979

Sondra M. Andrews
Marty L. Atcheson
Pamela L. Fipps
Larry J. Fowler

Paula Hodges
R. Kedar Hodges
Barbara Panhorst Lassiter
Joey D. Parris
Ernest R. Leopard
Ronald P. Spinharney

1978

Sharon D. Haithcock
Sandra L. Robinson
Glenn R. Seward
Julia N. Seward

1977

Ruth C. Atcheson
Ellen J. Belliveau
Alfred S. Furr
Elizabeth F. Hedrick
Ralph Sarlin
Jan S. Wiggins

1976

Sherry F. Alloway
Barbara B. Bross
Darl Fowler, Jr.
Susan C. Hooks
Deborah McKamey
Tom Morgan
Sharon E. Pierce
Joseph W. Stallings
Richard A. Stanley, Jr.
Karen B. Swinney

1975

Sandra H. Albertson
Janene J. Bryson
Kathy R. Stallings
Deanna P. Tegen
Robbie W. Wiggins
Julian H. Yelton, Jr.

1974

David W. Cox
Larry E. Hooks
David L. Jennings
Susan G. Jennings
Larry Jones
Milton Lowe
Verna J. Lowe
Lynn D. Miller
Kenneth E. Nix
Gary B. Phaup
Sherry H. Rainey
William G. Rainey

Jerry D. Swaney
Samuel R. Swinney
Charles A. Tegen
D. Jonathan Watts
Karen Y. Watts
D. Kenneth Whitener

1973

Susan M. Bullard
Carolyn S. Jones
William Jonathan Payne
Nathan Putney
Rhonda P. Swaney
Timothy Smith
Wanda Y. Whitener

1972

Gary Arrowood
Nancy Posey Edwards
Brantley Hart
Una R. Harvey
Lorie M. Jennings
Brenda J. Putney
Paul L. Wilcox

1971

Wanda W. Hagood
Donald E. Jennings
T. Joseph Lusk

1970

Phillip E. Baily
Michael J. Bonham
Lonnie H. Daniel
Lewis B. Edwards
Milton Todd

1969

Samuel B. Cole
Martha M. Funnell
John C. Hearn
Faye C. LaBar
Laura D. Lusk
Donald W. Milstead
Buddy Rampey
Joan W. Rampey

1968

Yvonne H. Arrowood
Donna K. Baker
Elizabeth J. Baker
Jean Cleveland Bonham
Ronald L. Brank
Stephen L. Everhart

Leon D. Fowler
Reginald E. Gentry
Faith L. Hutcheson
Carol C. Milstead
John Mullinax
Betty Sue Rickman
Carol B. Sinnamon
Mary H. Todd
Barbara J. Woody

1967

Judy M. Black
Robert E. Black
Carolyn S. Geist
Lyle R. Geist
Sally S. Wood

1966

Tony Baker
Doris C. McCracken Clark
Vinelle P. Davis
Carroll P. Hutcheson
C. Mickey Rickman
Sandra D. Swift

1965

Martha B. Baily
Gail C. Jones
Rachel M. Quarles
Fonda A. Rist
Shelby J. Simmons
Don D. Wood

1964

Velon H. Gray
Judith M. Hale
J. Paul Hilson
William Gordon Mullinax
Ruth Rampey O'Shea
Richard N. Sykes

1963

Barbara S. Dixon
Janet M. Freeman
Marlin B. Mull
Sandra Randolph J. Poppell
Jay Marvin Quarles, Sr.
Anne C. Sheriff
John Q. Taylor

1962

James M. Capps
Jeanette M. Childs
Morris Davis

Charles L. Joiner

1961

Kenneth Foutz
David O. Funderburk
James G. Green
Geraldine F. Masters
Barbara C. Mullinax
Robert R. Nash
James L. Schmutz

1960

Gloria H. Joiner
Dennis R. Kendrick
Henry F. Shigley
Frances Tomlin

1959

James B. Bross
Ellen W. Hurst
A.J. Kendrick
Dora C. Wiggins

1958

Jo Ann M. Davis
Tommy Joe Neyman
James E. Wiggins

1957

Kenneth Bauer
William L. Benton
Rosalyn S. Bowman
Carmella Johnson Coleman
Roxana P. King
C. V. Marchbanks

1956

Jane R. Bauer
Sammy D. Bratcher
Jean Day
Gloria D. Jones
David L. King
Charles W. Lusk
Verna C. Mitchell
Paul B. Wood

1955

Mae W. Bayse
James C. Blackburn
Shirley B. Brown
Doris M. Flint
Billy Jones
Clifford R. Lovin
Sarah C. Myers

Shirley S. Neyman
William F. Purkey
Herschel A. Smith
Mary E. Kelley
Bobbie Jean Strand

1953

James W. Clark
Kenneth D. Dickens
Rachel S. Dickens
Darl L. Fowler
Patricia P. Milam
Evangeline P. Smith
Ruth O. Smyrl
Carolyn D. Wilcox

1952

John H. Cole Jr.
Syvilla M. Fortune
William French
Lellaree Greene
Thomas R. Matherlee
Maggie Seymore

1951

Mary C. Fowler
Ruth P. Rampey
W. Marshall Rampey
Clara W. Warnke

1949

Loney W. Cowart

1948

Thomas E. Cowart
Edwin Davis
Elijah A. Cockman
Malcolm E. Ellis
Naomi D. Hughey
William D. James
Charles Little
Bonnie P. Tippey
Hal G. Robbins
Joe C. Sawyer
D. Clifton Wood

1947

Bobby Haithcock
Richard E. King
Hardie D. Medders
Curtis Newman
Wilbur G. Williams

1945

Lillian A. Robbins
Orr Neal Lynn Robinson
Mary W. Thomas

1944

Eloise Hunter Estate
Edgar B. Thomas

1943

Marie Evatt
Martha S. Swordfager

1942

Faith N. Hobson

1941

Martha S. Evatt

1940

Mary Faith G. Jennings Estate

1939

Evelyn E. Banker
Evelyn T. Rickman

1937

Mary P. Mitchell

Current Student Alumni

Kaitlyn Aldrich
Ashley Bowers
Jacqueline Guiry
Brianna Hydes
Erin King
Courtney Williams

Kernersville Alumni

David M. Albertson
Frederick D. Andrews
Sondra M. Andrews
Jill Cooper
Allene W. DeWeese
Ralph Dorsett
Janet M. Freeman
Ruth Gearren
Donna Heasley
Edythe H. Mullis
Judy M. Nance
Darlyne S. Phillips
Wesley Phillips
Myrtle Cude Radford
Leo Record
Marietta P. Record

Evelyn T. Rickman
James C. Smith
Ruth S. Smith
Samuel R. Swinney
Victoria B. Teague
Carroll M. Upton
Carolyn Upton

EMPLOYEES

Marty Atcheson
Bob Black
Judy Black
Nancy Boone
Rob Bowling
Joe Brockinton
Willa Brockinton
Devon Broome
Joy Bryant
Royce Caines
Don Campbell
Andria Elaine Carpenter
Justin Carter
Lisa Corbin
Mary Costello
Kim Cotton
Daryl Couch
Joan Crain
Liz Crawford
John Davis
Walt Davison
Jeff Dennis
Jane Dill
Ken Dill
Keith East
Fran Finch
Susan Finley
Brad Fipps
Dana Frost
Scott Frost
Krista Coots Garren
Emily Germain
Mari Gonlag
Lisa Hall
Linda Hall
Nikki Hanson
Katherine Sarah Hanson
Regina Bolding Harned
Matt Harper
Vicki Hayes

Laurie Hillstock
Paula Hodges
Charlotte Houke
Keith Iddings
Danita Jones
Paul Jordan
Bob Kerstetter
Gail Kerstetter
Carl King
Lee Kizer
Eddy Lawton
Lillie Lewis
Tracy Lippard
Rock McCaskill
Sandra McClendon
Roger McKenzie
Betty Mealy
Martha Mishoe
Winnie Molloseau
Diana Lynn Moody
Rocky Nation
Deb Nodine
Jim Owens
Khristy Parham
Thomas Parham
Cheryl Parris
Chad E Peters
Sherri Peters
Donna Pittman
Mike Preusz
Bill Raynor
Mickey Rickman
Sue Rickman
Camilo Rodriguez
Stephanie Rodriguez
Chip Rouse
Susan Rouse
Melanie Rowell
Paul Schleifer
Robert Sears
Roberta Sears
Byron Shirley
Kristi Shirley
Walt Sinnamon
Carol Sinnamon
Jeff Slagle
Allison Stewart
Deanna Tegen
Jason Andrew Tegen
Kelly Tegen
Dave Tolan

Jeannie Trudel
Melissa Vess
Todd Voss
Erin Washington
Harold M. Waters
Jeff Watson
Kim Welborn
Charlie Williams
Chris Williams
Donna Wood
Ben Xie
Amanda Young
Greg Young

TRUSTEES

Phillip E. Baily
William L. Benton
Daniel A. Berry
James Wesley Brown
Louise H. Carlton
Donald L. Carr
E. Keith Carroll
Thomas H. Cayce
D. Mike Chambers
Darl L. Fowler
J.D. Fralin
Russell K. Gunsalus
Kenneth R. Heer
Marlin R. Hotle
William D. James
Charles L. Joiner
Daniel E. LeRoy
Daniel N. Loggins
Jerry L. Lumston
Donald W. Milstead
John William Ott
Hershel A. Pruitt
Buddy Rampey
Gregory Reynolds
Henry F. Shigley
Herschel A. Smith
Keith W. Smith
Joseph W. Stallings
Patrick J. Styers
D. Kenneth Whitener

FRIENDS

Ms. Miriam R Adderholdt-Elliott
Mr. Michael and Judge Sherry Alloway

Mr. and Mrs. J.D. Almond
Mr. and Mrs. J.D. Andrews
Mr. and Mrs. David Wayne Andrews
Mr. and Mrs. James A. Avant
Dr. Stephen F. Babby
Ms. Mary Beth Bagley
Mr. and Mrs. Donald F. Baker
Mr. and Mrs. Robert M. Ballentine
Mr. and Mrs. E. Stanley Banker
Mr. and Mrs. John Basham
Mr. D L Bayse
Mr. and Mrs. Patrick A. Bennett
Mr. and Mrs. Elton Beougher
Mrs. Helen Binns
Mr. and Mrs. O. Daniels Black
Mr. and Mrs. Ron Black
Mr. and Mrs. Quentin Black
James Douglas Boggs
Mr. and Mrs. Glen Bolding
Mr. Tim Bolding
Mrs. Sandra Bolick
Mrs. Celeste N. Boudolf
Mr. David Bradshaw
Dr. and Mrs. Ronald R. Brannon
Mr. Bobby Brown
Mr. Justin Brown
Mr. and Mrs. Ed T. Bryant
Mr. Joe Bryant
Mr. and Mrs. Robin Lee Bryant
Mr. and Mrs. Edward Bryson
Hon. Susan R. Burch
Mr. and Mrs. Greg K. Burger
Mr. and Mrs. Wilbur Burgin
Mr. and Mrs. Mark D. Burns
Mr. Jim Bush
Mr. and Mrs. John T. Caldwell
Mrs. Peggy Ann Camp
Mr. Mike Cappola
Mr. and Mrs. Joseph H. Carrigan
Andrew R. Cato
Mr. George Chastain
Mr. and Mrs. Farrell Childers
Mr. William H. Clayton
Mr. Lawrence A. Clayton
Mr. N. Q. Cline
Ms. Nellie C. Cloninger
Mr. John Cockman
Mrs. Patricia Collins
Marcus Andrew Cook
Mr. and Mrs. Ryan Corbin
Mr. Jeff Costello

Mr. Don Costello
Mr. and Mrs. Richard E. Cotton
Mr. Joseph D. Craig
Mr. and Mrs. Ray Crawford
Ms. Tamera Crowell
Mr. and Mrs. Alton B. Cumbie
Rev. Donald A. Dawalt
Mrs. Carolyn W. Dickson
Mr. James C. Dill
Ms. Wanda Dittman
Mr. Vick B. Dixon
Mr. and Mrs. Scott Dover
Mr. Steven Douglas Draper
Mr. Bob DuBose
Mr. Dean DuVall
Mr. James Dykhouse, CPA
Mrs. Cathy M. Earlywine
Dr. Rich Eckley
Mr. and Mrs. Robert L. Edwards
Mr. Leon Ellis
Hon. Wendy Enochs
Ms. Barbara A. Erceg
Barney D. Jones Estate
Robert M. Clayton Estate
Mr. and Mrs. William Eugene Evans
Mr. and Mrs. Harry C. Farmer
Brandon Paul Faulkenberry
Mr. and Mrs. Timothy J. Flanagan
Mr. Ray Flasch
Ms. Louisa Ready Fleming
Mr. and Mrs. James R. Floyd
Mrs. Velma Fowler
Mr. Corey Roger Gareri
Mr. and Mrs. George B. Garman
Mr. Donald C. Garrett
Ms. Ruth H. Gearren
Dr. and Mrs. Daniel E. Gentry
Mr. and Mrs. Richard F. Gettings
Mr. and Mrs. L. Dale Gilbert
Ms. Janet Giles
Mrs. Betty B. Goforth
Mr. Paul Levi Goldstein
Ms. Ruth J. Gonlag
Francisco Luis Gonzalez
Mr. and Mrs. Marvin W. Gordon
Mr. Steve Graham
Mr. and Mrs. Steve Gray
Mr. Rion Groomes
Ms. Doris R. Gunsalus
Dr. and Mrs. Harold R. Gunsalus
Mr. and Mrs. James R. Gurley

Dr. Lee M. Haines
 Mr. Ronald E. Hale
 Mr. and Mrs. Timothy A. Hamby
 Ms. Heather Hamilton Inc.
 Mr. Michael and Rev. Priscilla Hammond
 Mr. and Mrs. William B. Harley, Jr.
 Mr. and Mrs. Derrick Hart
 Mr. Robert J. Hawk
 Mr. Mark Hawkins
 Mr. Mike Hayes
 Mr. and Mrs. Joseph Hayes
 Mr. and Mrs. J. C. Hayes
 Mrs. Thelma R. Hendren
 Mr. and Mrs. Philip L. Hendricks
 Mr. and Mrs. Robert L. Hettich
 Mrs. Zelma Higgins
 Mr. and Mrs. Gilbert H. Hine
 Ms. Susan Tan Hoffpauir
 Mrs. Carol P. Holcombe
 Ms. Rachel Homler
 Chris & Charlen Honnen
 Mr. David K. Hoover
 Mr. Eddie V. Horne
 Mr. and Mrs. Bryan Kevin Howard
 Ms. Thelma W. Howard
 Mr. and Mrs. Alan E. Howard
 Mr. Olin D. Hunter
 Ms. Pamela L. Huss
 Dr. and Mrs. G. Earl Hydrick
 Mrs. Peggy L. Iannolo
 Mr. O K. Jennings
 Dr. and Mrs. Thomas E. Jennings
 Mr. John Johnson
 Mr. and Mrs. Charles R. Jones
 Mr. and Mrs. Henry D. Julian
 Mr. and Mrs. Robert D. Kaminer
 Mr. Brian Kaminer
 Mr. Donald Karns
 Mr. Gregory Keatley
 Mr. and Mrs. Palmer E. Keaton
 Mrs. Opal Keeran
 Rev. and Mrs. David Livingston Keith
 Mr. and Mrs. Peter Keller
 Dr. and Mrs. Ronald D. Kelly
 Mr. and Mrs. Bradley Keown
 Mrs. Joanne Marie Kindley
 Mr. and Mrs. Wilton King
 Mr. and Mrs. Fred G. King
 Mrs. Margaret Cockman Kitchel
 Mr. and Mrs. Dean Kring
 Dr. and Mrs. Martin LaBar

David Nicholas Ladd
 Mr. and Mrs. David A. Ladd
 Mrs. Sheila Langnecker
 Mr. Dale and Mrs. Julia Lappin
 Mr. and Mrs. Tom A. Larson
 Mr. W. Harold Lineberger
 Mr. and Mrs. Arthur J. Lipina
 Mr. and Mrs. Ron Lippard
 Ms. Jackie Loggins
 Lynn A. Lollis
 Mr. and Mrs. Larry F. Looper
 Ms. Virginia Losey
 Ms. Nathalie Ann Lubin
 Mrs. Robin L. Mahony
 Dr. and Mrs. Wilbur J. Mahony
 Mrs. Jennifer Manczko
 Mrs. Alice J. Manczko
 Dr. Nancy B. Mann
 Mr. and Mrs. David Rex Martens
 Mr. and Mrs. Clyde Martin
 Mr. William B. Martin, Jr.
 Ms. Jennifer J. McAlister
 Rev. Ronald C. McClung
 Ms. Mary Earline McDaniel
 Ms. Cindy A. McDonald
 Mr. Evan McDonald
 Mr. and Mrs. Sam McDonald
 Mr. Michael A. McGee
 Mr. and Mrs. Larry A. McGlashan
 Rev. and Mrs. Walter E. McKee, Jr.
 Thelma Jean McKenzie
 Mrs. Janie C. McKinney
 Mr. Bryant and Dr. Sandra McLendon
 Mr. James David Mmenimen
 Drs. Chuck and Betty Mealy
 Mr. Dillard E. Medford
 Ms. Patricia C. Metcalf
 Mr. and Mrs. Stephen P. Miller
 Ms. Mary Misenheimer
 Mr. and Mrs. Al Molloseau
 Mr. and Mrs. Warren Morgan
 Mr. and Mrs. Tom Morgan
 Mrs. Yvonne H. Morgan
 Mr. and Mrs. Wilford C. Morris
 Mr. and Mrs. Don Mueller
 Mrs. Agatha E. Murphy
 Mrs. Rebecca J. Newby
 Ms. Melinda Nicholson
 Alfred Cleveland Nix
 Mrs. Virginia Norwood
 Mrs. Timothy Kevin O'Callaghan

Mr. Travis Oswald
 Mr. W. H. Overstreet
 Mr. Christopher J. Painter
 Mrs. Norma C. Palmer
 Mr. and Mrs. Phillip Milton Paradise
 Mrs. Florence M. Parker
 Mr. and Mrs. Robert Payne
 Rev. and Mrs. William F. Peed
 Ms. Katherine Petry
 Mr. Marvin M. Phaup
 Ms. Beverly G. Poissant
 Rev. and Mrs. T. Wayne Preusz
 Dr. and Mrs. Everett Putney
 Mrs. Mary A. Ramsey
 Mr. Chip Reeves
 Ms. Sandra Rickman
 Ms. Marlene Robel
 Mr. Larry Roberson
 Mr. and Mrs. James T. Roberts
 Mr. and Mrs. Keith D. Robinson
 Mr. and Mrs. Alvin K. Robinson
 Mr. and Mrs. Johnny Ross
 Dr. and Mrs. George M. Rupp
 Blake Sanders
 Mr. Richard Blake Sanders
 Mr. Scott Sanders
 Ms. Mary B. Sanders
 Mrs. Priscilla Andrews Sanders
 Mr. Mark R. Santi
 Mr. and Mrs. Ralph Sarlin
 Mrs. Brenda K. Satterfield
 Mr. and Mrs. Donald E. Schaupp
 Mrs. Helen J. Schenck
 Dr. and Mrs. James L. Schmutz
 Mr. Dennis Schwab
 Ms. Nancy S. Scruggs
 Mr. Tommy Seigler
 Mr. Christian W. Selle
 Ms. Rhonda D. Sheets
 Mr. and Mrs. Fred F. Short
 Mr. and Mrs. Glenon A. Simpson
 Ms. Betty Sims
 Mr. and Mrs. Claude L. Smethers
 Mr. A. O. Smith
 Dr. and Mrs. Bruce Allen Snyder
 Ms. Anna M. Speaks
 Mrs. Virginia Cockman Speaks
 Dr. and Mrs. David J. Spittal
 Mr. and Mrs. Levon Stack
 Ms. Gladys Stewart
 Mr. and Mrs. Joseph E. Taylor

Ms. Kathleen R. Tegen
 Mr. Stanley Thompson
 Mr. Leo Tilley
 Rev. and Mrs. Wayne E. Tippey
 Mr. and Mrs. Maurice Tolan
 Ms. Annie Tribble
 Ms. Maree Turner
 Mr. and Mrs. Gary Voncannon
 Mrs. Marla A. Walker
 Ms. Charlotte Q. Walker
 Mrs. Edwin B. Wallace
 Mr. Larry T. Ward
 Mr. and Mrs. W. Weston Warren
 Ms. Betty Lou Washburn
 Mr. William W. Wassmann
 Mr. and Mrs. Robert L. Wassmann
 Ms. Geraldine C. Waterhouse
 Mr. and Mrs. Danny Waters
 Ms. Barbara Watts
 Dr. Theodore C. West
 Mr. and Mrs. Ray White
 Dr. and Mrs. Boyce Whitman
 Mr. and Mrs. Michael D. Whitney
 Mr. and Mrs. Donn A. Williams
 Mr. David J. Williams
 Dr. and Mrs. Woodie Williams
 Mrs. Joy P. Willis
 Mr. G. Wayne Wilson
 Mr. Melvin Witcher
 Mrs. Ruth S. Woo
 Mrs. Carolyn K. Wooley

SC BUSINESSES & FOUNDATIONS

3 Spoons Yougurt of Clemson, LLC, SC
 Advanced Prosthetics of Easley, Inc., Easley, SC
 AT&T Foundation, Princeton, NJ
 Bank of America, Charlotte, NC
 Lockheed Martin Corporation, Cherry Hill, NJ
 Milliken and Company, Spartanburg, SC
 Norfolk/Southern Foundation, Norfolk, VA
 The Duke Energy Foundation, Princeton, NJ
 D. L. Scurry Foundation, Columbia, SC
 Beeson-Rosier Group, Easley, SC
 Carolina Ad Specialty, Lyman, SC
 Chick-Fil-A at Clemson, FSU, SC
 Comfort Inn - Clemson, SC

Community Foundation Gaston County, Inc., Gastonia, NC
 CSI - Computer Software Innovations, Inc., Easley, SC
 First Citizens Bank, Clemson, SC
 Fowler Corporation, Anderson, SC
 Goldstein Charity Golf Tournament, Clemson, SC
 Grant Body Shop, Inc., Pickens, SC
 Hardees, Central, SC
 Heritage Synthetic Turf, Anderson, SC
 Huffman & Associates, Inc., Greenville, SC
 Indexx Incorporated Printing Solutions, Greenville, SC
 Liberty Family Pharmacy, Liberty, SC
 Manufacturers Tool & Die Co, Inc., Spenceport, NY
 Memory Gardens, Inc., Clemson, SC
 MSW Security Solutions Inc, Belton, SC
 The Parkette, Pickens, SC
 Pepsi Bottling Group, Inc., Columbia, SC
 Pickens Savings & Loan Assn, F.A., Pickens, SC
 Piedmont Pest Control, Laurens, SC
 Ram, Greer, SC
 Sardis Den, Inc, Clemson, SC
 SC Department of Public Safety, Columbia, SC
 Sharp Business Systems, Greenville, SC
 Sonic Drive-in, Anderson, SC
 Sophia's Alterations, Easley, SC
 South Carolina Independent Colleges & Universities, Inc., Columbia, SC
 Stewart Enterprises, Jefferson, LA
 Trehel Corporation, Clemson, SC
 Trophies Unlimited, Easley, SC
 Village Inn, Pickens, SC
 Western Sizzlin, Clemson, SC
 Whitener & Pettigrew LLC, Clemson, SC
 Wingard Jewelers, Easley, SC

CHURCHES & ORGANIZATIONS

12Stone Church Inc., Lawrenceville, GA
 Advance SC LLC Education Program, Greenville, SC
 ALIVE Wesleyan Church, Central, SC
 Asheville Wesleyan Church, NC
 Baywood Wesleyan Church, Galax, VA

Blacksburg First Wesleyan Ch., Blacksburg, VA
 Boiling Springs First Baptist, Spartanburg, SC
 Brevard Wesleyan Church, NC
 Brooksville Wesleyan Church, FL
 Carolina Chaos Baseball Inc, Clemson, SC
 Center for Scholarship Admin., Inc., Taylors, SC
 Central Wesleyan Church, Thomasville, NC
 Christ Wesleyan Church, Greensboro, NC
 Clement Mem. Wesleyan Church, Hurt, VA
 College Wesleyan Church, Marion, IN
 Emmanuel Wesleyan Church, Roanoke, VA
 Emmanuel Wesleyan Women, Lexington, NC
 Faith Wesleyan Church, Greensboro, NC
 Faith Wesleyan Church, Lakeland, FL
 Firestone Wesleyan Church, Gastonia, NC
 First Baptist Church, Sylacauga, AL
 First Wesleyan Church, Bessemer City, NC
 First Wesleyan Church of Bessemer City, NC
 First Wesleyan Church of Kannapolis, NC
 Greenwood Hills Wesleyan Church, High Point, NC
 Hayworth Wesleyan Church Faith Promise, High Point, NC
 Helen Batson Sunday School Class, Pickens, SC
 High Point Area Wesleyan Men, NC
 Liberty Wesleyan Church, Summerfield, NC
 Life Journey Church, Pelzer, SC
 Lyman Wesleyan Church, SC
 Lyman Wesleyan Women, Campobello, SC
 Mount Airy Wesleyan Church, NC
 Mountain Road Wesleyan Church, Glen Allen, VA
 NC West Wesleyan Women, Kannapolis, NC
 New Life Church of the Nazarene, Oak Ridge, TN
 North Carolina East District, High Point, NC
 North Carolina West District, High Point, NC
 Old Zion Wesleyan Church, Tabor City, NC
 Penn Jersey District, Allentown, PA
 Pickens View Wesleyan Church, SC
 Providence Wesleyan Church, High Point, NC
 Rockwood Wesleyan Church, Rockwood, TN
 SC District of the Wesleyan Church, Seneca, SC
 South Coastal District of The Wesleyan Church, Conyers, GA

Trinity Wesleyan Church, Central, SC
United Wesleyan Church, Easley, SC

ENDOWED SCHOLARSHIPS

Nowlan Allen Team Work Dream Work Endowed Scholarship
J. D. Andrews Family Endowed Scholarship
William Marshall Arnold, Sr. Endowed Scholarship
Allen Baker Memorial Endowed Scholarship
Robert & Gladys Ballentine and Naaman & Sara Newton Endowed Scholarship
Baxter and Dovie Gibson Memorial Endowed Scholarship
Bross Endowment Fund
John H., Dora G., & Maudie Brown Endowed Scholarship
Buel Memorial Scholarship Fund
Butner Memorial Endowed Scholarship Fund
Stephen and Louretta Calhoon Endowed Scholarship
Darvin B. Camp Endowed Scholarship
Clyde T.and Lillian G. Bryant Endowed Scholarship
Esther Baker Roberts Endowed Scholarship
George and Grace Bross Endowed Scholarship
James L. Burnett Endowed Scholarship
April Camp Endowed Scholarship
Clark Camp Endowed Scholarship
Edmond A. Cash Endowed Scholarship
James G. Childs Memorial Endowed Scholarship
John F. and Ethel N. Childs Endowed Memorial Scholarship
Clayton Genealogical Center Endowed Scholarship
Lawrence Garvin Clayton, M.D. Endowed Scholarship
Correll Ministerial Scholarship Fund
Haskell and Emma Cleveland Family Memorial Endowed Schol.
Walter Thompson Cox Endowed Scholarship
John Lee and Tarva Davis Endowed Scholarship
Morris and Vinelle Davis Endowed Scholarship
Calvin Dennis Memorial Endowed Scholarship

Dillon Memorial Endowed Scholarship
Dongell, Elliot, Fipps Endowed Scholarship
Darl and Mary Fowler Family Endowed Scholarship
Dowden-Tegen Endowed Scholarship
Malcome E. and Lois S. Ellis Endowed Scholarship
Kathleen Emblar Memorial Endowed Scholarship
Endowed Scholarship for Christianity in Science
Gallimore Memorial Endowed Scholarship
General Endowed Scholarship
Foster D. Gentry, Sr. Endowed Scholarship
Melvin Gentry Endowed Scholarship
Ruth Goff Endowed Scholarship
Goizuetta Foundation Scholarship
Janet Carriker Green Endowed Scholarship
Reverend Sidney Allen and Clara Sue Hamby Endowed Scholarship
John and Thelma Hendren Endowed Scholarship
Hilson Student Endowed Scholarship
Marion Wallace Hobson Memorial Endowed Scholarship
Honor Thy Father and Mother Endowed Scholarship
House Memorial Fund
Larry Dean Hoyle Endowed Scholarship
Paul Hardin Endowed Ministerial Scholarship
Randall A. Hill Endowed Scholarship
Charlie Johnson Endowed Scholarship
Jimmy F. Johnson Endowed Scholarship
*Barney and NaDean Jones Memorial Endowed Scholarship
Frances and Gordon Miller/Kernersville Endowed Scholarship
Michael S. Ketchem Endowed Scholarship
Arthur and Ruth Lovelace Endowed Scholarship
C. Wesley Lovin Endowed Scholarship
Dedra C. Lewis Memorial Endowed Scholarship
Raymond Lawson Endowed Scholarship
C. V. Marchanks Endowed Scholarship
Martin Luther Communication Scholarship
Mauney Scholarship Fund
Bob McDonald Scholarship
Walker McElmoyle College Endowed Scholarship

Dewey O. Miller Ministerial Memorial Endowed Scholarship
Frances and Gordon Miller Music Scholarship
Morrison-Harvey Alumni Endowed Scholarship
Rebecca C. Marks Endowed Scholarship
Robert W. and Laura V. Morgan Endowment
Robert W. and Yvonne H. Morgan Endowment
Virgil A. and Mary P. Mitchell Endowed Scholarship
Virgil A. Mitchell Trust Fund
Nash Family Endowed Scholarship
NC West District Wesleyan Youth Endowed Scholarship
Neff Endowed Scholarship
Nellie Linder Trust
John M. and Rebecca J. Newby Endowed Scholarship
Newton Endowed Scholarship
Jeffrey Alan Patton Memorial Endowed Scholarship
B.H. & Dorothy Phaup Holiness Lecture Series Endowment
Gail Pierce Memorial Endowed Scholarship
Harold and Eunice Powell Endowed Scholarship
Marshall and Ruth Rampey Family Endowed Scholarship
Anita L. and Melvin K. Richardson Scholarship
Levi Rigdon Endowed Scholarship
Betty Morgan Robbins and Colbert Robbins, Jr. Endowed Scholarship
Stephen T. and Susan P. Rushton Endowed Encouragement Scholarship
Reverend Ivan L. Sisk Endowed Scholarship
John Storey Endowed Scholarship
Stanley Endowed Scholarship
Teacher Excellence Award
Rennie, Sr. and Lillian Tomlin Endowed Scholarship
Fonda C. Von Cannon Memorial Endowed Scholarship
Betty Walker Endowed Scholarship
John Wesley Memorial Scholarship
Miriam C. Warren Endowed Memorial Scholarship
Robert L. White Endowed Scholarship
James Ralph and Mary Louise Gurley Young Endowed Scholarship

*indicates new scholarships established during 12-13

RESTRICTED (ANNUAL) SCHOLARSHIPS

Excellence in Accounting Scholarship
Archippus Fund-Ministerial Scholarship
G.H. Allred & F.A. Mason Grad. Scholarship
Brank Memorial Scholarship
Cap Care Group, Inc. Scholarship
Church Matching Scholarship
Matthew Dellinger Business Scholarship
Foutz Scholarship
Goff Scholarship
Good Shepherd Ministerial Scholarship
Adult and Graduate Studies (AGS) Scholarship
Michael D. and Saranne F. Whitney Scholarship
Roy S. Nicholson Christian Service Scholarship
Parker Senior Award
Palmetto Scholarship
Ridgon Memorial Scholarship
Ken Scruggs Memorial Scholarship
Scurry Scholarship
Mary Alice Smith Scholarship
Dr. James Schmutz Scholarship
Surbrook Memorial Ministerial Scholarship
David L. Watts Memorial Scholarship
SC Wesleyan Kids for Missions Scholarship
SC Wesleyan Women Scholarship
Uebele-Dowden Scholarship
Wood Fund

HONORARIUMS

Allison Andrews
Scott Sanders
Fred and Sonnie Andrews
Scott Sanders
JD Andrews
Zelma Higgins
JD and Audrey Andrews
Scott Sanders
JD's Birthday
Fayedene A. Riddle
JD Andrews Family
Ruth S. Woo
Jerry and Betty Andrews
Scott Sanders

Darl and Mary Fowler's 60th Anniversary
Darl Fowler
Rev. Jerry Lumston
David and Sandra Albertson
Bob Nash
Marcus Andrew Cook
Rev. Todd Reynolds
David and Sandra Albertson
Brian and Melanie Strickland
Scott Sanders
Dr. Todd Voss
Ken and Wanda Whitener
Stephen J. Lennox

MEMORIALS

Rev. Earl Alexander
Barbara J Woody
Nowlan Allen
Rhonda S. Wallace-Burge
James Barefoot
Clifton and Ernstena Wood
Darl L. Fowler
Mr. Forris Greene Barnard
Darl L. Fowler
Sue Binns Black
ALIVE Wesleyan Church
North Carolina West District
Barbara A. Erceg
Bobby Haithcock
Charles and Deanna Tegen
Mickey and Sue Rickman
Darl L. Fowler
Darl and Kim Fowler
Donald A Dawalt
EB.and Mary Will Thomas
Gary B. Phaup
Hal and Lillian Robbins
Helen Binns
James M Capps
Ken and Alice Foutz
Larry Roberson
Marianne Gonlag
Marla A. Walker
Martin and Faye LaBar
Don and Mary Costello
Mary P Mitchell
Paul and Christine Wood
Bob and Harriet. Nash

Roger W. McKenzie
Keith East
Ruth J. Gonlag
Tamera Crowell
Todd and Julie Voss
Marshall and Ruth Rampey
Jim Mahony
Dr. Watson C. and Sue Black
Lyle R. Geist
Janet Bowen
Glenn David Bowman
Patricia H. Castle
Howard B Castle
Mrs. Nellie Costello
Darl L. Fowler
Lois Ellis
Memory Gardens, Inc.
Darl L. Fowler
David Ellis
Trinity Wesleyan Church
Darl L. Fowler
Ruth Faulkenberry
Darl L. Fowler
Paul Faulkenberry
Darl L. Fowler
Mark A. Butcher
Jim Mahony
Paul and Ruth Faulkenberry
James and Barbara Bross
Rachel Homler
Mary Cockman Fowler
Christ Wesleyan Church
Christ Wesleyan Church, Seekers SS Class
Hanes Lineberry Funeral Home
First Wesleyan Church
Agatha E. Murphy
Anna M. Speaks
Bobby Haithcock
Carolyn K. Wooley
Carolyn W. Dickson
Charlotte Q. Walker
Mickey and Sue Rickman
Darl and Kim Fowler
Donald L Carr
E. Stanley Banker
Winnie Molloseau
Elijah A Cockman

Francisco Luis Gonzalez
 Gary B. Phaup
 Geraldine C. Waterhouse
 Gilbert H Hine
 James M Capps
 John Cockman
 Joseph H. Carrigan
 Katherine Petry
 Kay M. Frazier
 Larry J. Fowler
 Margaret Cockman Kitchel
 Don and Mary Costello
 Melvin Witcher
 Milton & Verna Lowe
 Paul and Christine Wood
 Pauline R Phillippe
 Ray White
 Bob and Harriet Nash
 Ronald D. Kelly
 Ruth O. Smyrl
 Sarah C. Myers
 From 18th Judicial District Judges
 Ron and Tracy Lippard
 Tom A. Larson
 Viginia Cockman Speaks
 Wendy Enochs
 William Eugene Evans
Melvin L. Gentry
 Central Wesleyan Church
 College Wesleyan Church
 Conerstone Health Care
 Arthur J. Lipina
 Bessie H. Mayfield
 Carolyn Hurt
 Clifton and Ernstena Wood
 Darl L. Fowler
 Donald L Carr
 Ellen Ann Foster
 Farrell Childers
 Frank Mock
 Gary B. Phaup
 George P. Oakley
 Gloria Sue Caldwell
 Gregory A. Hedrick
 Greenwood Hills Wesleyan Church
 Jeanette M. Childs
 Mary Ruth Lawler
 Miriam R. Adderholdt-Elliott
 Reginald E. Gentry
 Bob and Harriet Nash
 Roxana P. King

Thomas E. Jennings
Edward Bob Harvey
 Billie Faye Harvey
Edward Morrison Harvey
 Billie Faye Harvey
Talmadge Hughey
 Harold L. Benton
 John and Renee Atcheson
 Joe and Elizabeth Atcheson
James W. Jacobs
 Darl L. Fowler
Mary Faith Jennings
 Mickey and Sue Rickman
 Charles and Gloria Joiner
 Darl L. Fowler
 Ed T. Bryant
 Jeanette M. Childs
 Joyce Mordan Marschke
 Martin and Faye LaBar
 The NC West District
 W. Harold Lineberger
Lowell & Mary F. Jennings
 David L. Jennings
 Donald E. Jennings
 Ellen J. Belliveau
 Janene J. Bryson
James H. Johnson
 Charles and Gloria Joiner
NaDean B. Jones
 Alan E Howard
 Elton Beougher
Dr. and Mrs. Carl W. Lovin
 Clifford R. Lovin
Earline D. Rickman Lovin
 Central Wesleyan Church
 Firestone Wesleyan Church
 Betty B. Goforth
 Mickey and Sue Rickman
 Charles and Gloria Joiner
 Darl L. Fowler
 Evelyn T. Rickman
 John and Renee Atcheson
 Joe and Elizabeth Atcheson
 Mary A. Ramsey
 Morris and Vinelle Davis
 Naomi D. Hughey
 Sandra Rickman
 Sharron W. Palermo
 Thomas B. Bell

Gentry Family Fund
Dr. Bob McDonald
 Helen Batson Sunday School Class
Gordon Mullinax
 Darl L. Fowler
 Bob and Harriet Nash
Fredda Myers
 James R. Waldrop
George Newton
 Patricia M. Parrott
Rev. Lee Newton
 Faith N. Hobson
Lila Newton
 Faith N. Hobson
Gail Pierce
 Sharon E. Pierce
Wesley Pierce
 Sharon E. Pierce
Mrs. Schram
 Darl L. Fowler
Clarence Shigley
 Quentin Black
Mandy R. Simmons
 Shelby J. Simmons
Vera P. Storey
 Clifton and Ernstena Wood
 Darl L. Fowler
 Bob and Harriet Nash
Dr. Lewis P. Towles
 Philip L. Hendricks
Christine Voss Vande Kerk
 IWU, friends of President and Mrs. Voss
Betty Walker
 Geraldine B. Miggins
Rev. Billy Wagner
 Clifton and Ernstena Wood
 Marianne Gonlag
 Ruth J. Gonlag
James R. Young
 Sandra Bolick
Mary Louise Gurley Young's Birthday
 Sandra Bolick

NOW IS THE TIME...THIS IS THE HOUR!

WE NEED YOUR HELP TO MAKE THE NICHOLSON-MITCHELL CHRISTIAN MINISTRY CENTER A REALITY

If you haven't yet considered being part of this campaign, **NOW** is the time!

- We must raise approximately \$600,000 to reach the \$1.4 M needed to purchase and renovate the former campus church building which will become the future home of SWU's Division of Religion.
- Gifts can be made in honor or in memory of someone—naming opportunities are still available.

With this campaign, we are honoring the rich heritage left by Dr. Roy Nicholson and Dr. Virgil Mitchell while celebrating the bright future of Christian Ministry at Southern Wesleyan University.

Please don't assume this endeavor will be successful without your contribution.

Gifts of any amount are welcomed and appreciated!

For a brief history of the campus church, read "If These Stones Could Speak" by Dr. Robert Black at swu.edu/nmcenter.

With questions, please call **864.644.5008**
 Please make checks payable to: **SWU**
 Memo: **Nicholson-Mitchell CMC**
 Mail To: Development Office Box 1925
 P.O. Box 1020
 Central, SC 29630



STAY CONNECTED



SWU.EDU/CALENDARS

Save the Date

for
SWU GRANDPARENTS DAY
 FRIDAY, MARCH 21, 2014
GRANDPARENTS
 OF SWU STUDENTS WILL BE
 WELCOMED TO CAMPUS

More details coming soon!

SOUTHERN WESLEYAN UNIVERSITY
907 WESLEYAN DRIVE
PO BOX 1020
CENTRAL, SC 29630
www.swu.edu

Non-Profit Org.
US Postage
PAID
Greenville, SC
Permit No. 232

Return Service Requested

**SOUTHERN
WESLEYAN
UNIVERSITY**

**Let your name pave the way
for generations to come**

The Original ALUMNI WALK, established in 2011, will soon be complete so to ensure YOUR brick gets placed on the actual path where graduates are sure to pass—reserve your brick today!

Likely, this will be the **last chance** to get your brick into this particular sidewalk and/or at this price. Other prominent Alumni Walk locations will be designated in time, but space and time is limited for your brick to be positioned along this path. **For a limited time, the Alumni Office is able to secure your graduate-honoring brick with a minimum donation of \$100.** Your tax-deductible donation supports Southern Wesleyan University's Promise Fund.

Send your name, class year, inspiring message, favorite scripture notation, etc. quickly! Yes, you may order bricks honoring family members or friends. What a thoughtful gift that will last a lifetime!

**Email jbryant@swu.edu or call 864-644-5385
Visit www.swu.edu/rockthewalk**

